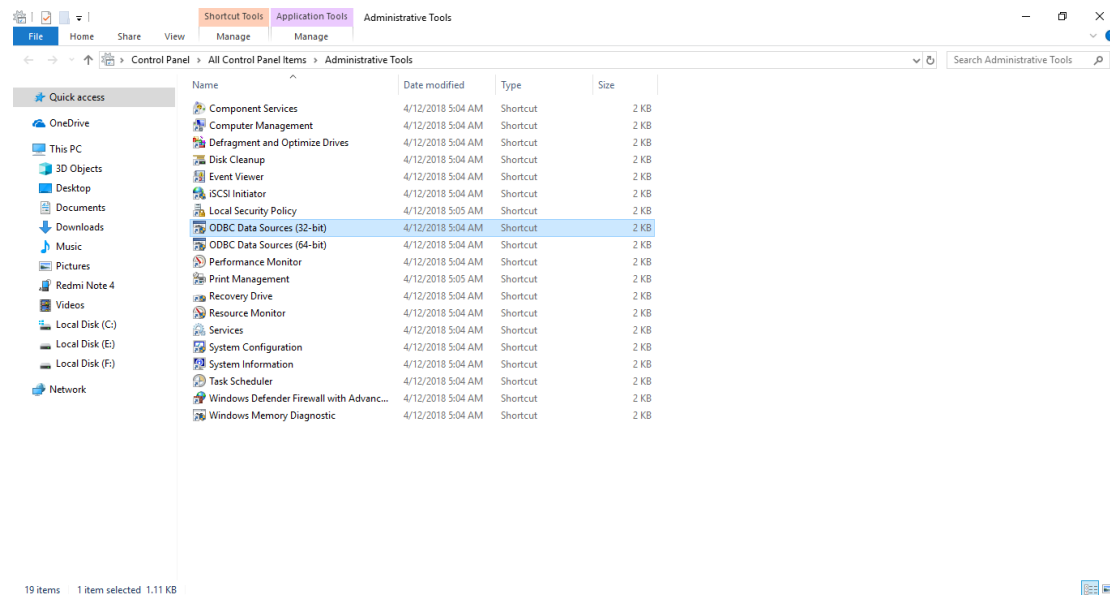
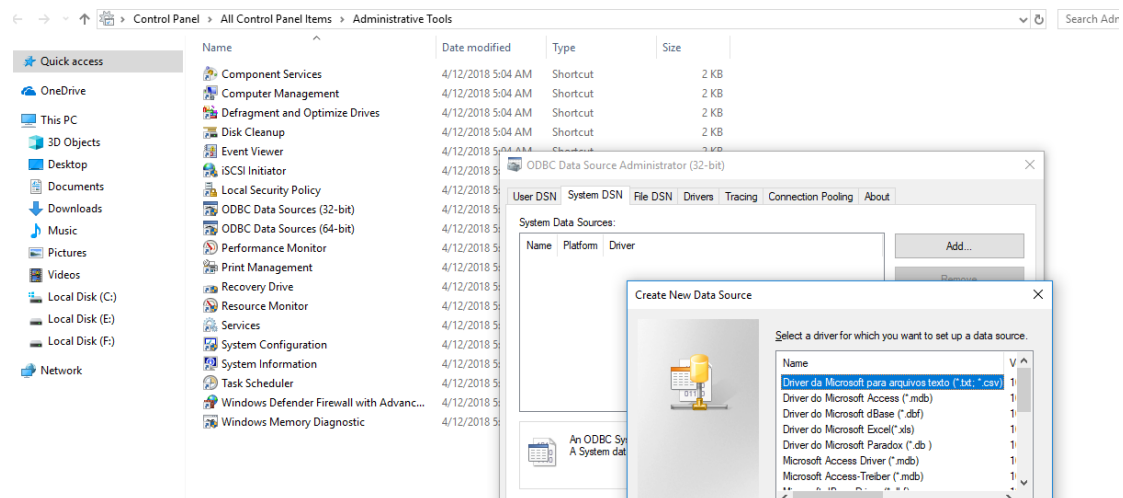


Steps to install & set up ODBC driver in UiPath

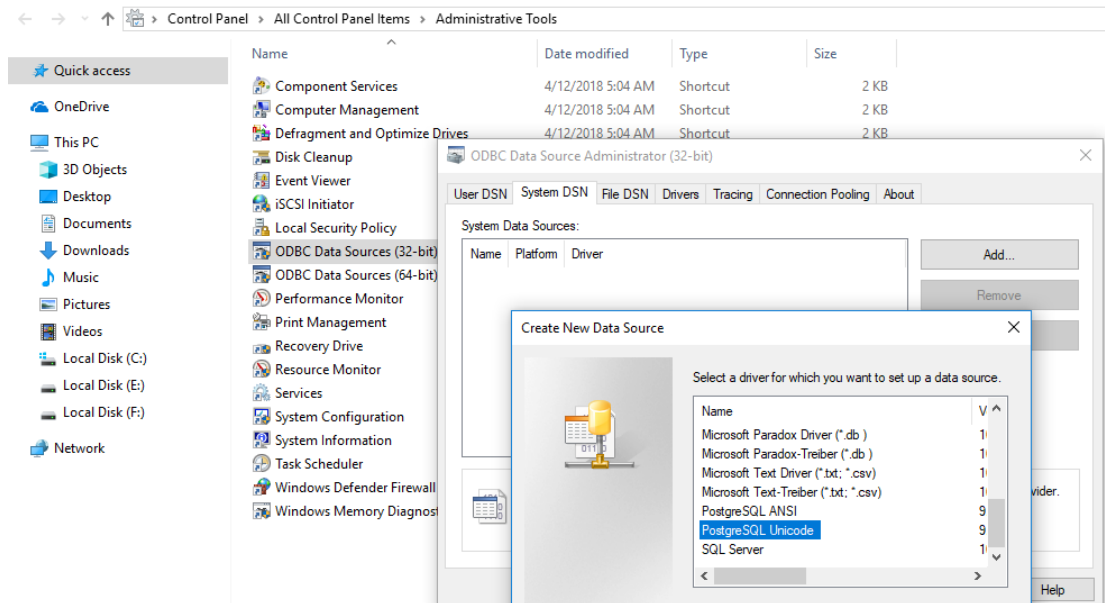
Step1 : Check whether ODBC drive is installed?



Step2: double click on **ODBC Data Sources (32-bit)** to add postgres (psqlodbc)

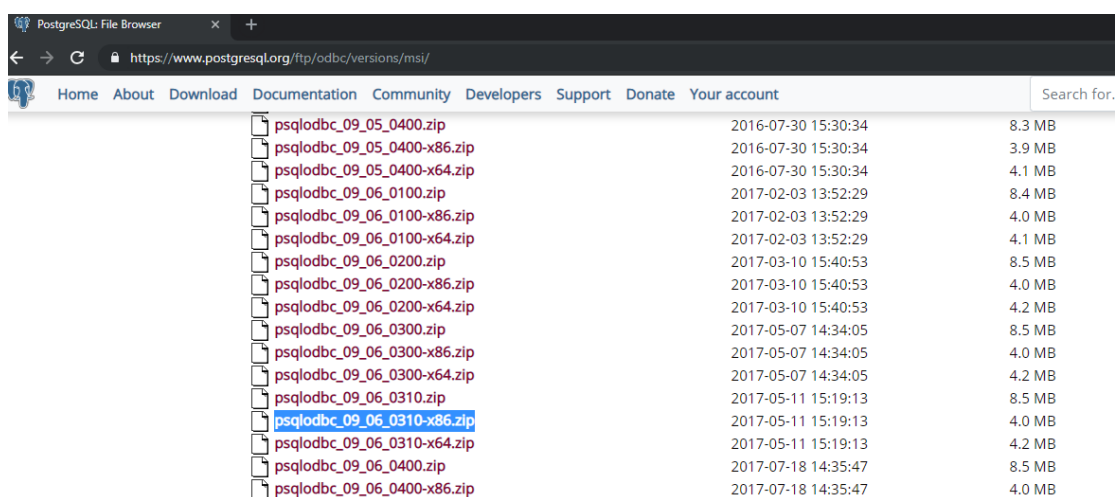


Step 3: click on PostgreSQL Unicode to add System DSN.



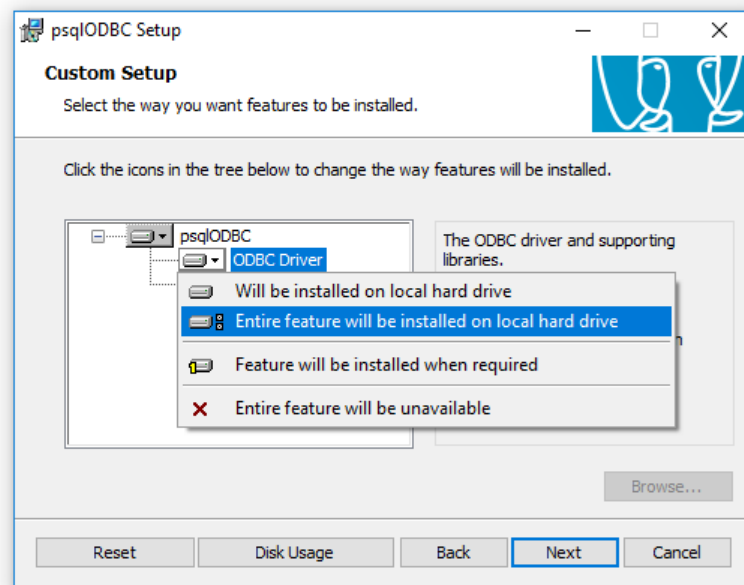
Step 4: if the PostgreSQL not shown, then download postgres sql odbc driver from the following site and follow the step3 to add System DSN.

<https://www.postgresql.org/ftp/odbc/versions/msi/>

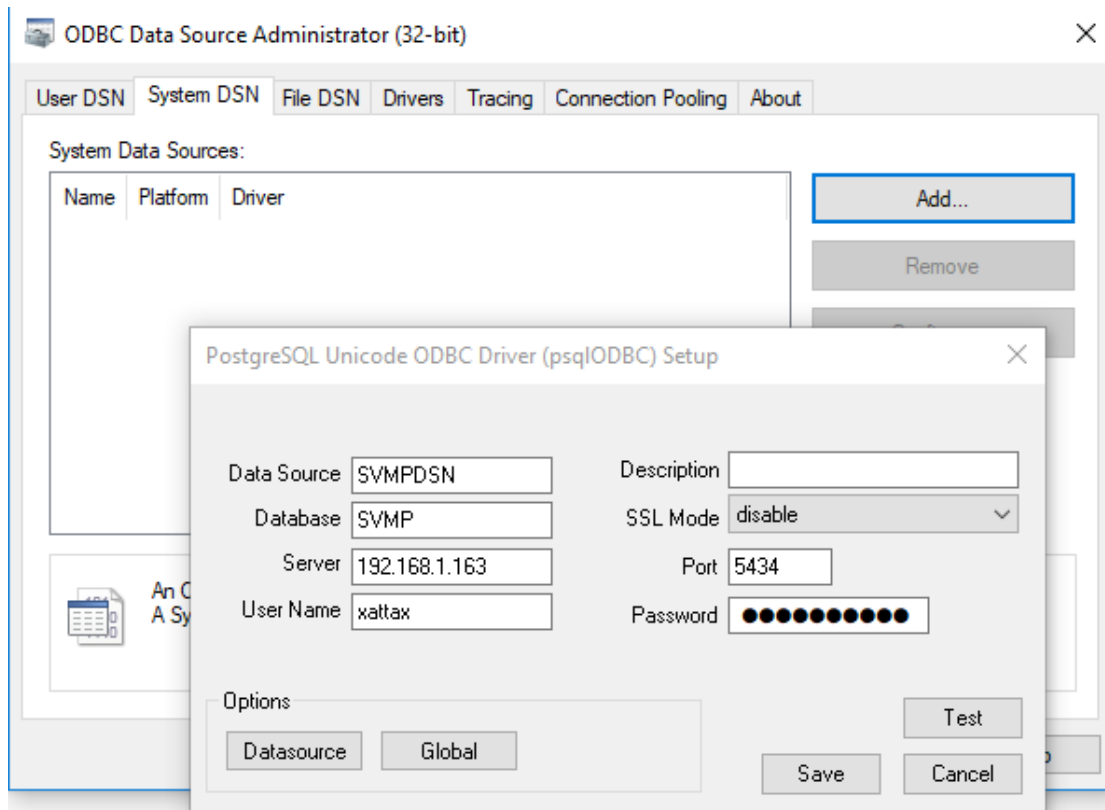


Install postgres sql drivers

psqlodbc_x86	5/11/2017 8:14 PM	Windows Installer ...	4,476 KB
README	3/10/2017 8:43 PM	Text Document	2 KB



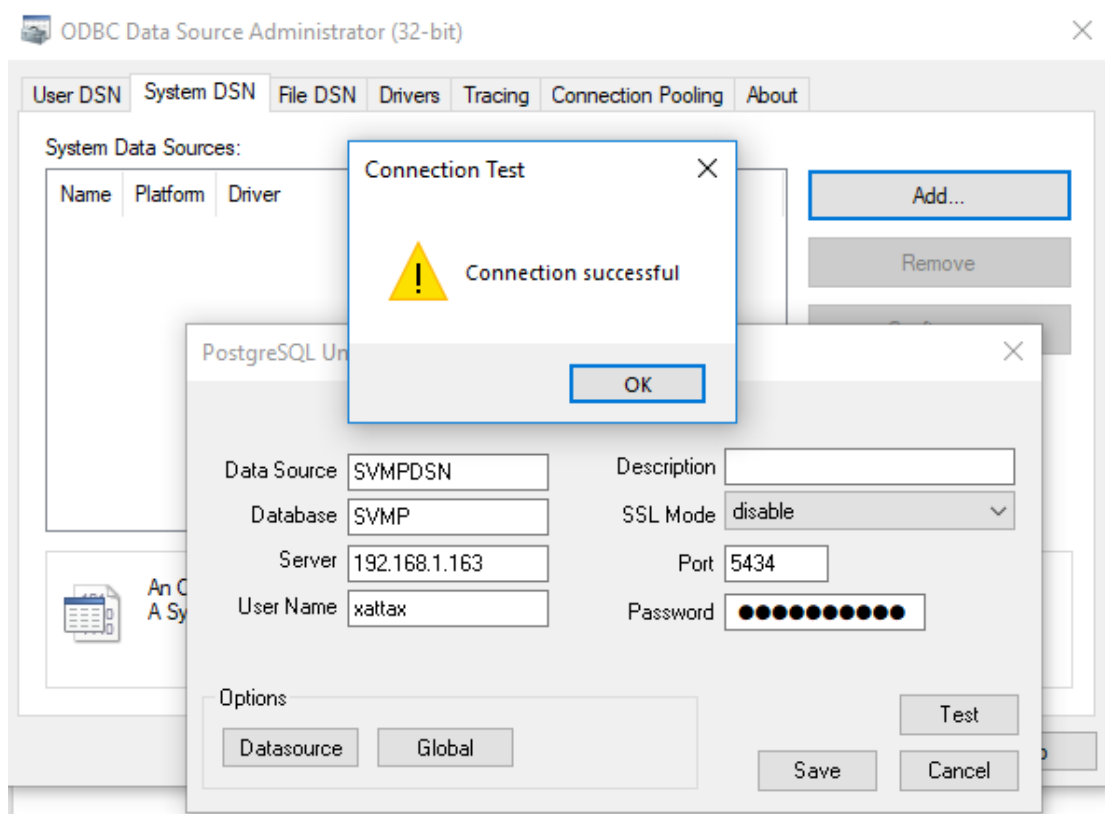
Step5: accordingly add the details to connect database, here in this screen shot, showing SVMP database details.



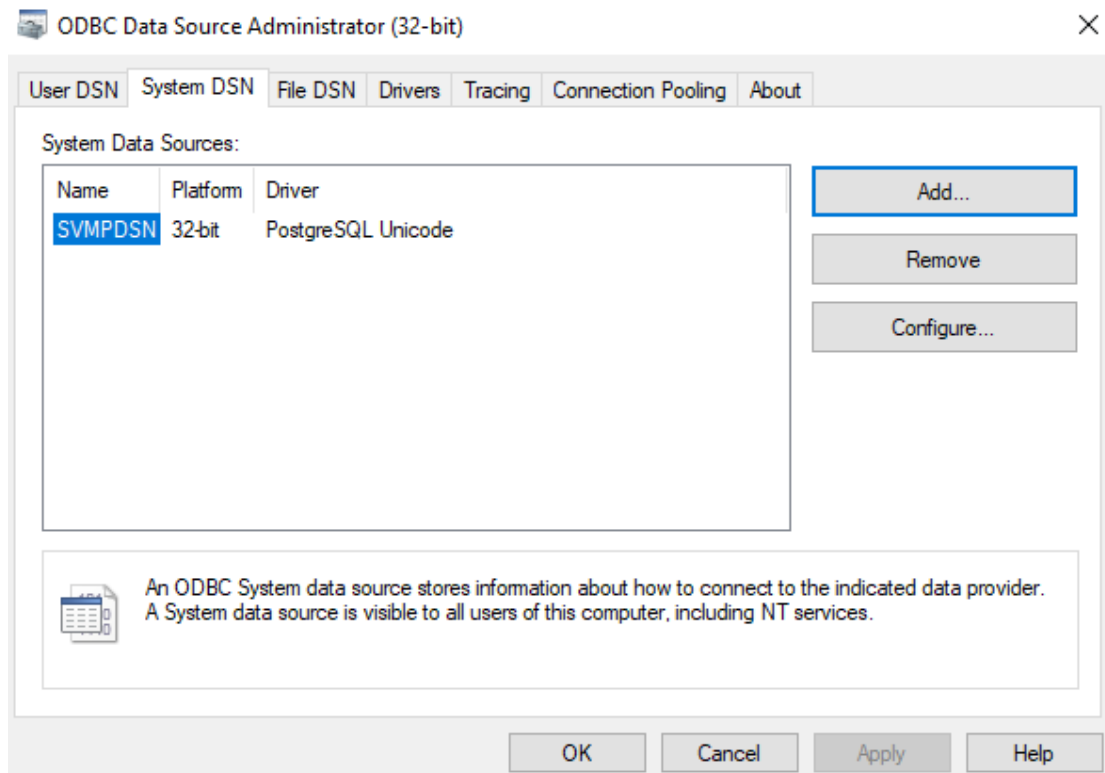
After, adding the details, click on **Test** to verify the database connection, Connection Successful pop-up displays if the connectivity successful. And click on Save to save the connection details.

Username: UrDBUserName

Password: UrDBPassword

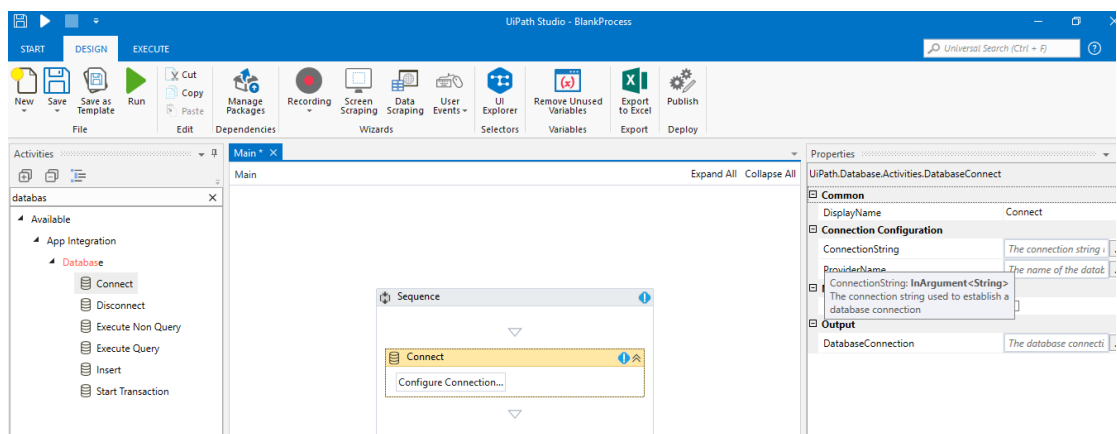


Following screen will be displayed, after clicking on Save button and click on OK button.

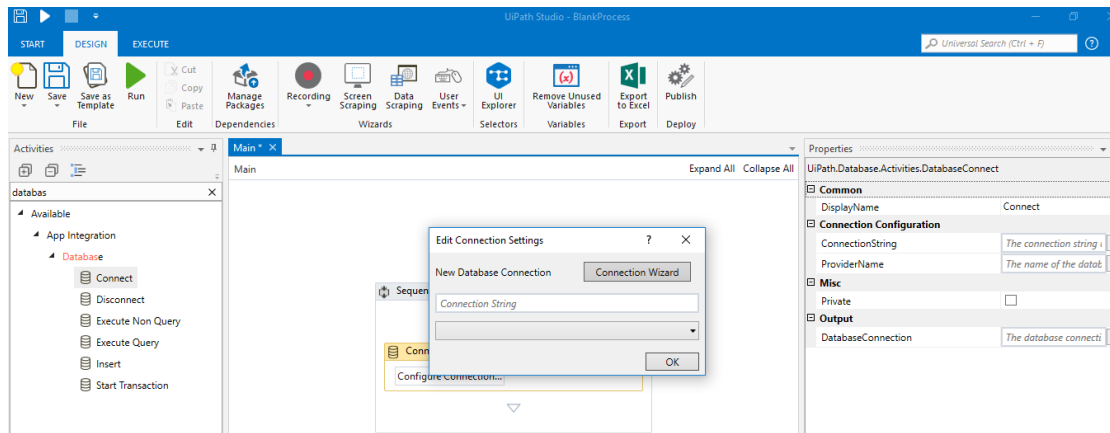


Step 6:

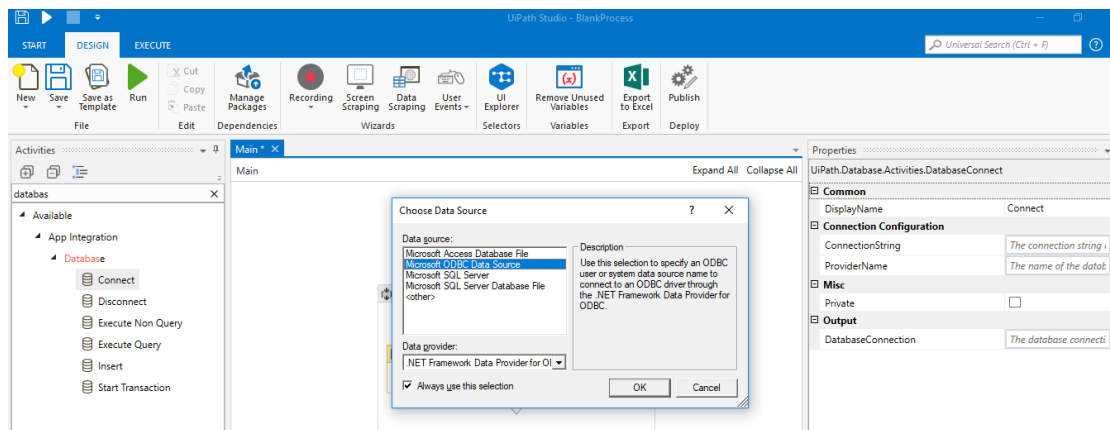
In UiPath, take the database connection and click on Configure Connection



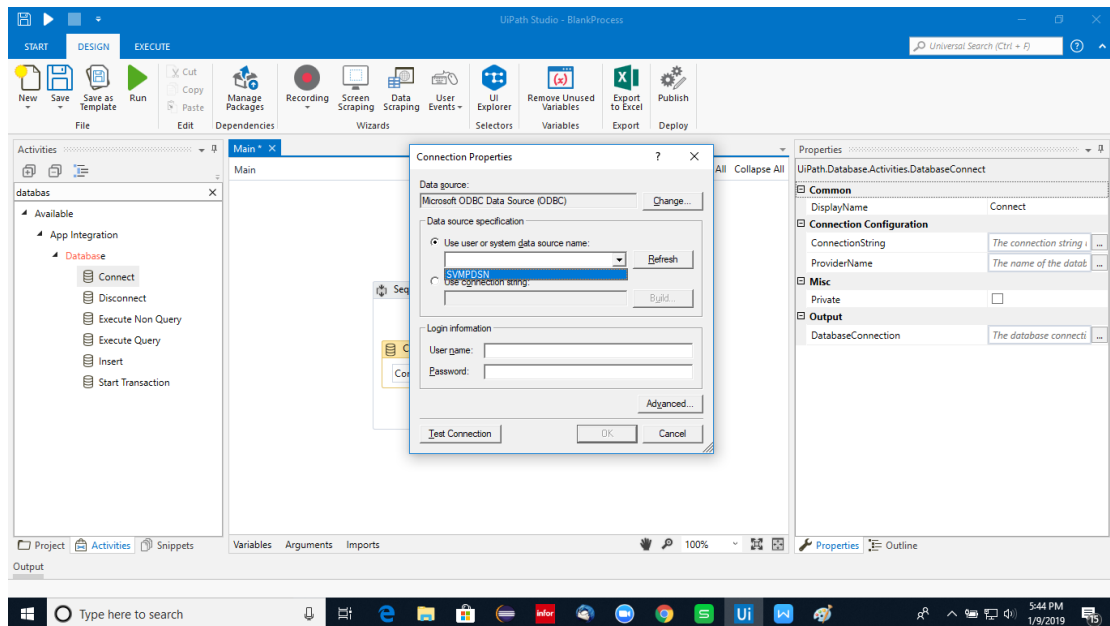
Step 7: click on Connection Wizard



Step8: select Microsoft ODBC Data Source, and click OK



Step9: click on drop down and select the required database, and to test the connection click on Test Connection.



Test connection successful pop up displayed, click on OK button, click OK button on Connection Properties window. This establishes the database connection.

