



Robotic Process Automation

- [Products](#)
 - [UiPath Studio](#)
 - [UiPath Robots](#)
 - [UiPath Orchestrator](#)
- [Solutions](#)
 - [Robotic Process Automation](#)
 - [Business Process Automation](#)
 - [Accounts Payable Automation](#)
 - [Claims Processing Automation](#)
 - [Intelligent Process Automation](#)
 - [BPO Automation](#)
 - [Back Office Automation](#)
 - [Call Centre Automation](#)
- [Technologies](#)
 - [Desktop Automation](#)
 - [Web Automation](#)
 - [GUI Automation](#)
 - [Screen Scraping](#)
 - [Citrix Automation](#)
 - [Mainframe Automation](#)
 - [SAP Automation Software](#)
 - [Excel Automation](#)
- [Resources](#)
 - [Video Tutorials](#)
 - [User Guides](#)
 - [Examples](#)
 - [Knowledge Base](#)
 - [Community Edition](#)
 - [Release Notes](#)
- [Company](#)
 - [Blog](#)
 - [News](#)
 - [Whitepapers](#)
 - [Contact](#)
 - [Partners](#)
 - [Jobs](#)

Try UiPath Software[Start Free Trial](#)[Contact Us](#)

Knowledge Base

How to: Schedule a Process Manually

Quick Answers

[Scheduler and Launcher](#)

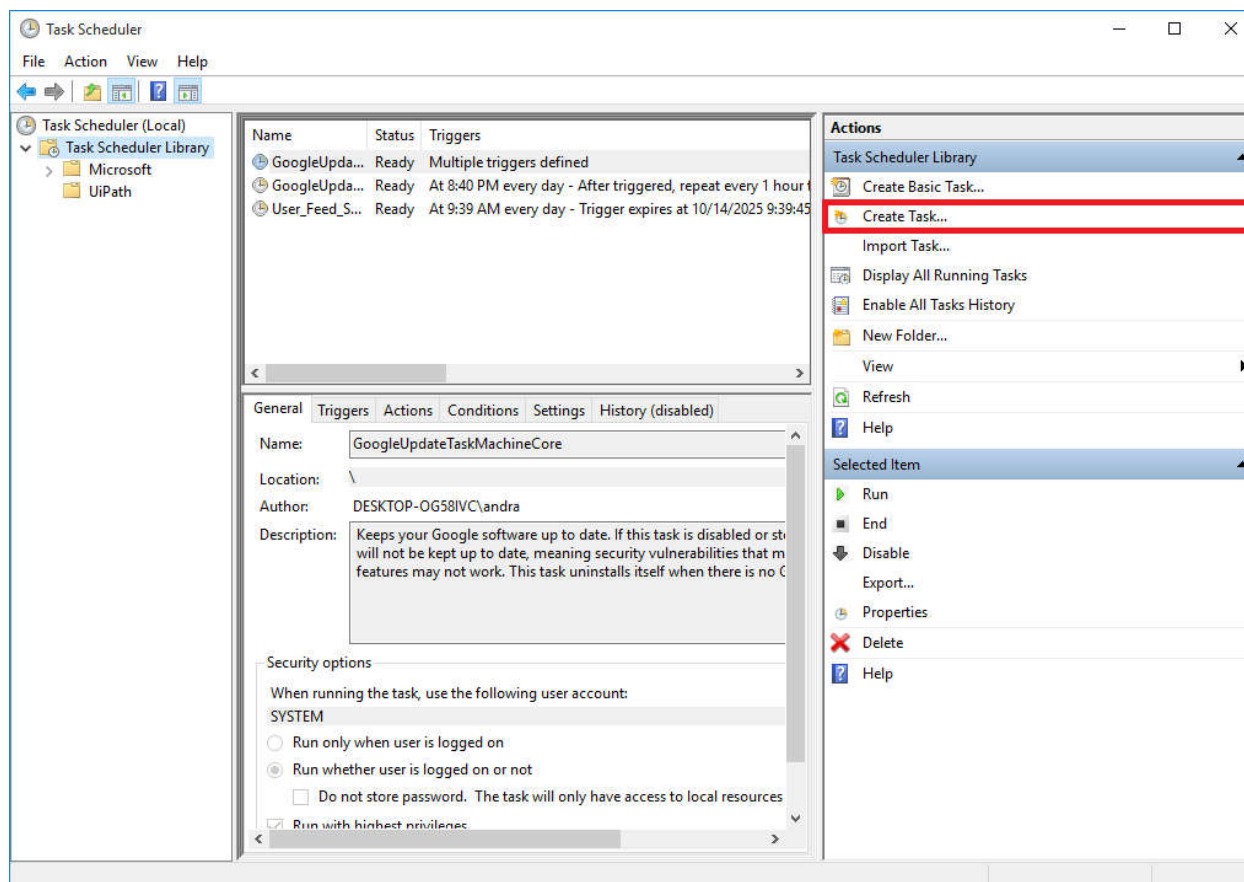
Please note: This feature requires administrator rights.

Using [Windows Task Scheduler](#), you can schedule any UiPath process to run at a time that is most convenient for you. Follow the steps below to schedule your own task.

Step 1. Open **Windows Task Scheduler**

Step 2. Select **Task Scheduler Library**

Step 3. Click **Create Task** from the **Actions** pane



Step 4. Give a name to your task.

Step 5. Click **Change User or Group...** to select the user that should be executing this process

Step 6. Add a new [trigger](#) in the **Triggers** pane

Step 7. Go to the **Actions** pane and click **New...** button

- In **Program/script** add the complete path to UiRobot.exe application. This is usually located in C:\Program Files(x86)\UiPath Studio\v8\UiRobot.exe
- In **Add arguments edit** add /file:"<absolute_path_to_your_main_workflow>" /monitored /executor /cc /preferConsole
- The arguments can be modified according to your needs. Learn more [here](#) about available arguments for UiRobot.exe.

Step 8. If **Run whether user is logged on or not** was selected:

- Make sure the [Logon as batch job](#) policy is set for the executing user
- If the user account is not logged on when the corresponding task is triggered, the service will use the credentials requested to run as the specified account in Windows session 0. **UiPath also needs these credentials in order to start your process in an interactive Windows Session. To provide them, you need to manually store them in in Windows Credential Store.**
- Open [Credential Manager](#)->Choose **Windows Credentials** and add a **new Generic Credentials** with the following format
 - Internet or network address: **UiPath:user=<domain\username>***
 - User name: **domain\username**
 - Password: **Your user's password**

The screenshot shows the 'Add a Generic Credential' dialog box in Windows. The title bar reads 'Add a Generic Credential'. The breadcrumb navigation shows 'User Accounts > Credential Manager > Add a Generic Credential'. Below the navigation is a search bar for the Control Panel. The main content area is titled 'Type the website address and your credential information' and includes a note: 'Make sure that the user name and password that you type can be used to access the location.' There are three input fields: 'Internet or network address' with the value 'UiPath=user:mydomain\andra', 'User name' with the value 'mydomain\andra', and 'Password' which is masked with dots. At the bottom right, there are 'OK' and 'Cancel' buttons, with 'OK' being the active button.

* - UiPath=user:{0} v8.1.5855.24349 - v2016.1.5942.30558
- v2016.1.5973.17970 or higher UiPath:user={0}

Type your question Search

Video Tutorials

- [Getting Started](#)
 - [Basic Concepts. Intro to UI Automation](#)
 - [Variables. Passing Data Inside a Workflow](#)
 - [Conditions. Branching a Workflow](#)
 - [The Basics of Desktop Automation](#)
 - [Debug Workflow](#)
 - [UI Automation and Data Inputs](#)
 - [Reusing Automation. Invoke Workflow and Templates](#)
- [UI Automation](#)
 - [Selectors - How To Identify UI Elements On Screen](#)
 - [Selectors - Complex UI Hierarchies](#)
 - [Selectors – Activities and Fine Tuning](#)
- [Web Automation](#)
 - [Automate Web Data Entry](#)
 - [Automate Web Data Extraction](#)
- [Screen Scraping](#)
 - [Screen Scraping Any Desktop Application: Java, .NET, WPF, Terminals](#)
- [Macro Recorder](#)
 - [Using UiPath's Recorder](#)
- [Introduction to Image Automation. Citrix and Virtual Desktops](#)
 - [Automate Citrix. Data Entry. Click Relative to an Image](#)
 - [Automate Citrix. Retrieve Data Using Clipboard](#)
 - [Automate Citrix. Retrieve Data Using OCR](#)
 - [Automate Citrix. Click Relative to a Text](#)
- [SAP GUI Automation](#)
 - [Automate SAP Data Entry](#)
- [Application Integration](#)
 - [SOAP Web Services and XML](#)
 - [REST Web Services and JSON](#)
- [Agent Assisted Automation](#)
 - [User Events](#)

User Guides

- [Getting Started](#)
 - [Workflow Designer](#)
 - [Reusing automations - Library](#)
- [Recording Overview](#)
 - [UiPath's Recorder](#)

- [Web Automation](#)
 - [Web Data Extraction](#)
 - [Extract HTML Tables](#)
- [Screen Scraping](#)
 - [How to Use Screen Scraping. The Basics](#)
- [SAP Automation](#)
 - [How To Automate SAP Applications](#)
- [TFS Integration](#)
 - [How to Map a Project to a TFS Project](#)
 - [How to Work on a Project Using TFS](#)
- [Mainframe and Terminals Automation](#)
 - [How to Automate Mainframe and Terminals](#)

- [PRODUCTS](#)
 - [UiPath Studio](#)
 - [UiPath Robots](#)
 - [UiPath Orchestrator](#)
- [SOLUTIONS](#)
 - [Robotic Process Automation](#)
 - [Business Process Automation](#)
 - [Accounts Payable Automation](#)
 - [Claims Processing Automation](#)
 - [Intelligent Process Automation](#)
 - [BPO Automation](#)
 - [Back Office Automation](#)
 - [Call Center Automation](#)
- [TECHNOLOGIES](#)
 - [Desktop Automation](#)
 - [Web Automation](#)
 - [GUI Automation](#)
 - [Screen Scraping](#)
 - [Citrix Automation](#)
 - [Mainframe Automation](#)
 - [SAP Automation Software](#)
 - [Excel Automation](#)
- [RESOURCES](#)
 - [Video Tutorials](#)
 - [User Guides](#)
 - [Examples](#)
 - [Knowledge Base](#)
 - [Community Edition](#)
 - [Release Notes](#)
- [COMPANY](#)
 - [Blog](#)
 - [News](#)
 - [Whitepapers](#)
 - [Contact](#)
 - [Partners](#)

- [Jobs](#)

© 2004-2016 UiPath. All rights reserved. [Terms of Use](#) | [Privacy Policy](#)