

Orchestrator 2016.1 Upgrade Guide

Information contained herein is confidential and may be disclosed only with the written permission of UiPath. All rights reserved.

UiPath Robotic Process Automation ®

Revision History

Date	Version	Author	Description
3rd August 2016	2016.1	Andrei Bogdan	Edited document

Table of Contents

1. Prerequisites	3
2. Installation	3
2.1. After Installation	4

The UiPath Orchestrator Upgrade Guide provides information to help you upgrade your version of Orchestrator 2016.1 to the latest stable one.

1. Prerequisites

Download <http://www.uipath.com/hubfs/download/server/Get-Orchestrator.ps1> in a folder where you want to store all Orchestrator installation packages (e.g. C:\OrchestratorKit).

Open PowerShell in elevated mode (as administrator).

Ensure that the execution policy is set to bypass. If is not set to bypass, run the following command: `Set-ExecutionPolicy Bypass` and select **Yes to All** by pressing the A key and then Enter.

Change the directory to where you downloaded the installation packages `cd .\Orchestrator.ps1` file (e.g. C:\OrchestratorKit) and execute the `.\Get-Orchestrator.ps1` script. The following files are downloaded:

- `Uipath.Server.Configuration.zip`
- `Uipath.Server.Deployment.zip`
- `Uipath.Server.Logging.zip`
- `Uipath.Server.Monitoring.zip`
- `Uipath.Server.Queues.zip`
- `Uipath.Server.Web.zip`
- `Scripts.zip`
- `Upgrade-Orchestrator.ps1`

2. Installation

1. Stop the UiPath Robot service on each client/robot machine that is connected to Orchestrator.
2. Open IIS Manager, click the computer name and, on the **Actions** panel, under **Manage Server**, press **Stop**. The IIS Server for the Orchestrator server is stopped.
3. Navigate to where Orchestrator was installed (for example C:\Inetpub\) and copy the installation folder there, with a significant name, such as `UiPathOrchestrator.2016.1.5499.backup`.
4. On the server where the database is installed, open Microsoft SQL Server Management Studio and connect to the server.
5. Back up the `UiPathPlatform` and `Queues` databases, and delete the `MonitoringPersistence` database.

Note: If you do not have rights to delete the `MonitoringPersistence` database, simply truncate all tables inside this database.

6. Go back to PowerShell in administrator mode, and make sure that the current folder is where you downloaded all the packages from the previous steps.
7. Run the `.\Upgrade-Orchestrator.ps1` script.

8. If you installed Orchestrator in the default folder (`UiPathOrchestrator`), press Enter when you are asked for the website name.

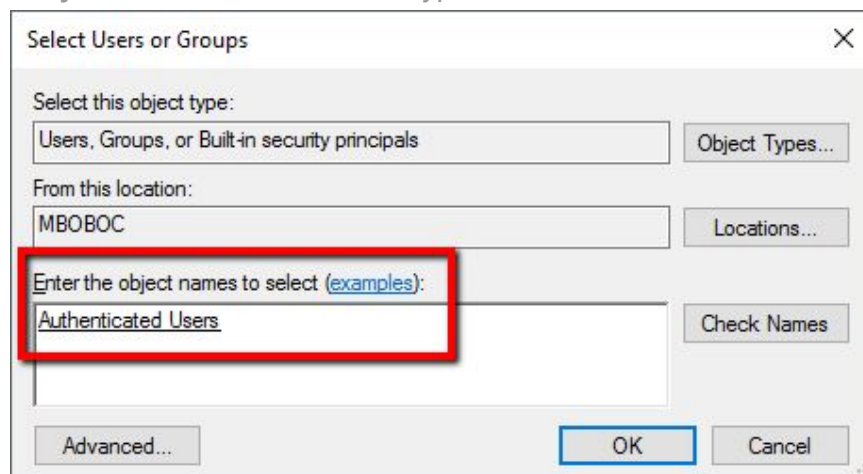
```
PS C:\Users\andreibogdan\develop\Automation> .\Upgrade-Orchestrator.ps1

-----
UiPath Orchestrator Update
-----
Ensure that UiPath Robot service is stopped on all robot machines and that IIS server is stopped on Orchestrator server

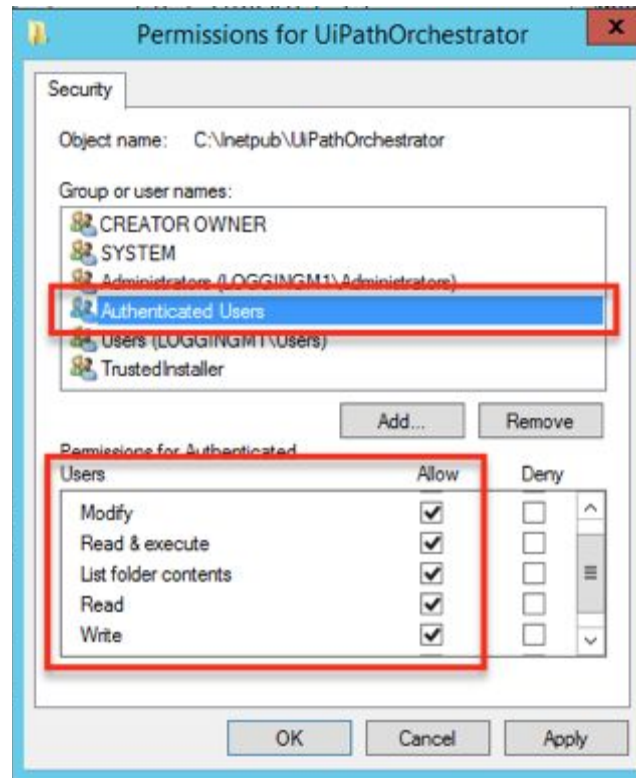
Enter Orchestrator website name (Enter for default - UiPathOrchestrator):
Will Upgrade UiPathOrchestrator
Testing artifact file UiPath.Server.Configuration.zip
Done testing artifact file UiPath.Server.Configuration.zip
Testing artifact file UiPath.Server.Deployment.zip
Done testing artifact file UiPath.Server.Deployment.zip
Testing artifact file UiPath.Server.Logging.zip
Done testing artifact file UiPath.Server.Logging.zip
Testing artifact file UiPath.Server.Monitoring.zip
Done testing artifact file UiPath.Server.Monitoring.zip
Testing artifact file UiPath.Server.Web.zip
Done testing artifact file UiPath.Server.Web.zip
Testing artifact file UiPath.Server.Queues.zip
Done testing artifact file UiPath.Server.Queues.zip
Installing package UiPath.Server.Configuration.. OK
Installing package UiPath.Server.Deployment.. OK
Installing package UiPath.Server.Logging.. OK
Installing package UiPath.Server.Monitoring.. OK
Installing package UiPath.Server.Web.. OK
Installing package UiPath.Server.Queues.. OK
```

2.1. After Installation

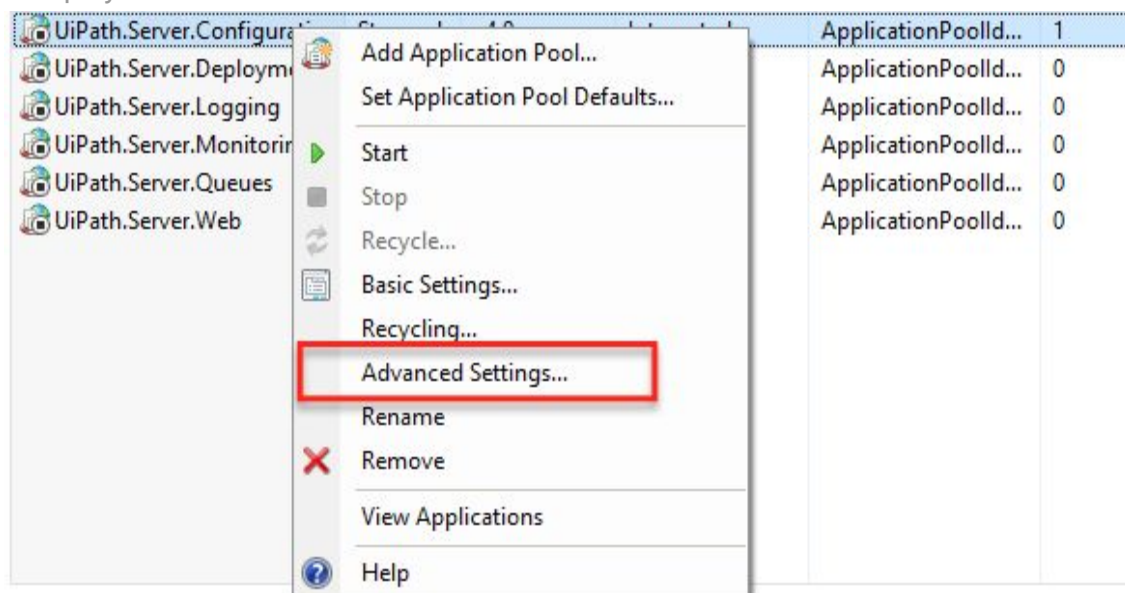
1. Navigate to where Orchestrator was installed (for example `C:\Inetpub\`).
2. Right-click the `UiPathOrchestrator` folder, and click **Properties**. The **Properties** window is displayed.
3. In the **Security** tab, click **Edit**. The **Permissions** window is displayed.
4. Click **Add**. The **Select Users or Groups** window is displayed.
5. In the **Enter the object names to select** field, type `Authenticated Users`.



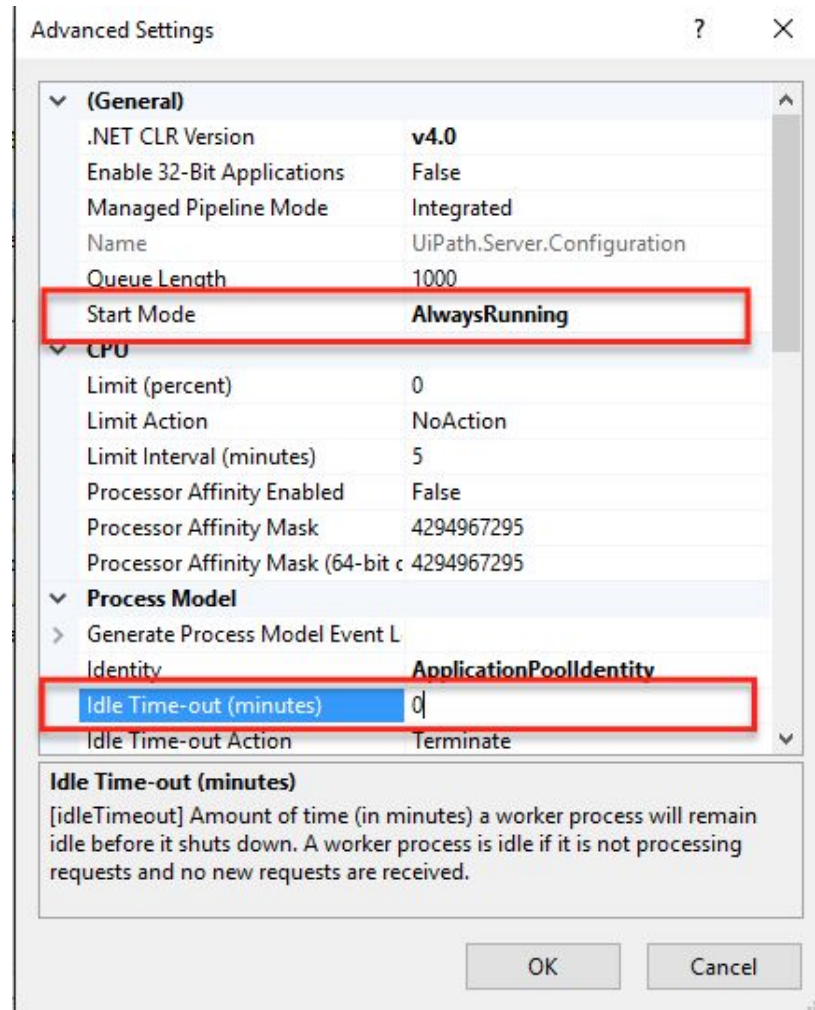
6. Click **Check Names** and, if the information is correct, click **OK**. The group is created and you return to the **Permissions** window.
7. In the **Group or User Names** section, select **Authenticated Users**.
8. In the **Permissions for Authenticated Users** section and select the following permissions: **Modify**, **Read & execute**, **List folder contents**, **Read** and **Write**.



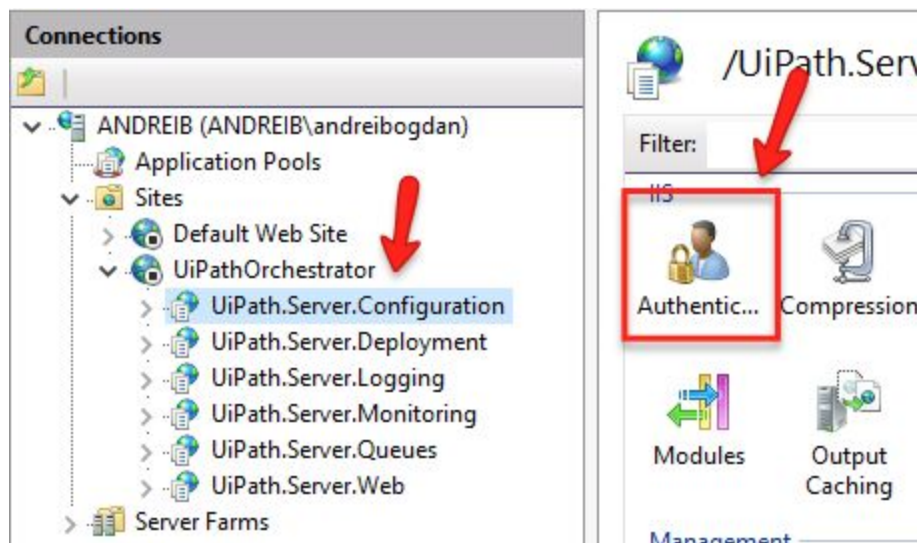
9. Click **Apply** and **OK**.
10. In IIS Manager, open **Application Pools** and for each application pool that is used by each UiPath Orchestrator web application do the following steps:
 - a. Right-click an application pool and click **Advanced Settings**. The **Advanced Settings** window is displayed.



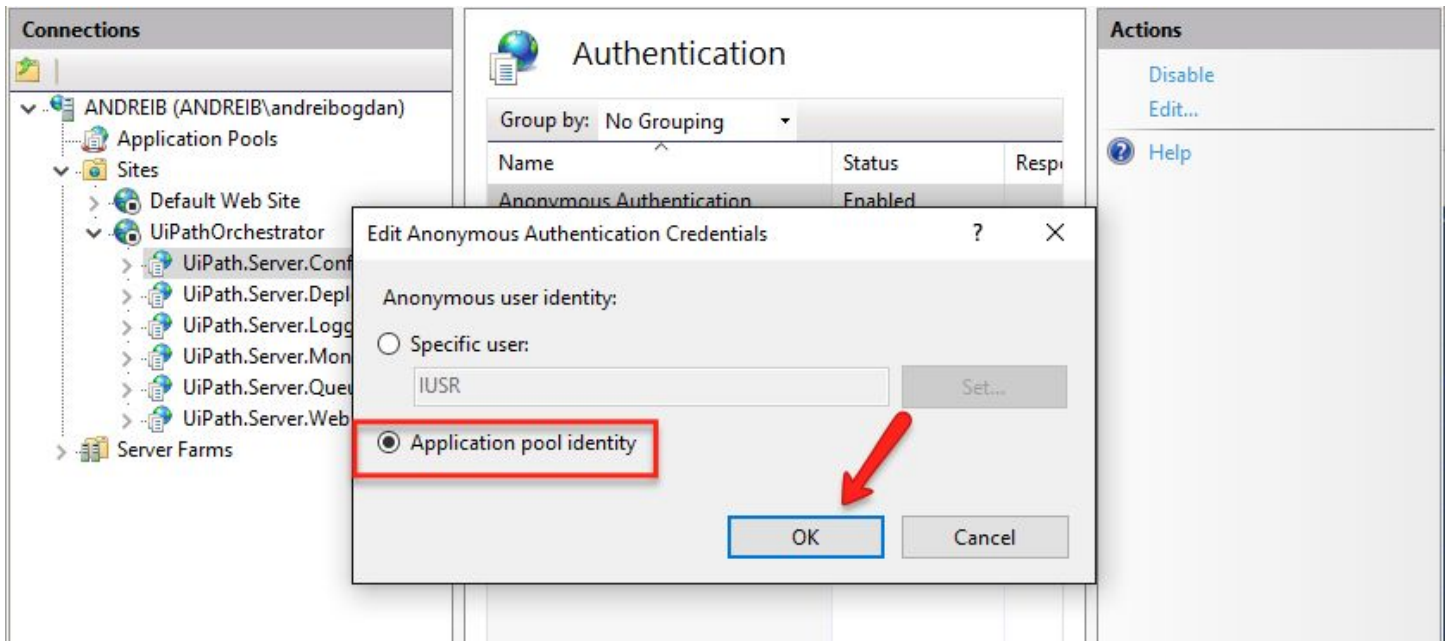
- b. Set **Start Mode** to **AlwaysRunning** and **Idle Time-out (minutes)** to 0.



- Click **OK**. Your settings are saved.
- In IIS Manager, in the **Connections** panel, expand UiPath Orchestrator and select the first web application (`UiPath.Server.Configuration`).
- In the **Main** panel, double-click **Authentication**.



- f. If **Anonymous Authentication** is set to **Enabled**, select it and, in the **Actions** panel, click **Edit**. The **Edit Anonymous Authentication Credentials** window is displayed.
- g. Select **Application pool identity** and click **OK**.



Note: Repeat the steps above for all the remaining web applications (`Uipath.Server.Deployment`, `Uipath.Server.Logging`, `Uipath.Server.Monitoring`, `Uipath.Server.Queues`, `Uipath.Server.Deployment`, `Uipath.Server.Web`).

11. Start IIS server and the new UiPathOrchestrator server.
12. Open Orchestrator in your browser, and navigate to the Jobs page. **The MonitorPersistence database is created.** (Optionally, you can access this page by following this link: [http://\[serverName\]/UiPath.Server.Web/Jobs](http://[serverName]/UiPath.Server.Web/Jobs).)
13. Check if your processes are available by going to the **Processes** page.
14. On each Robot/Client machine, start the UiPath Robot service.
15. In Orchestrator check if the Robots are available.