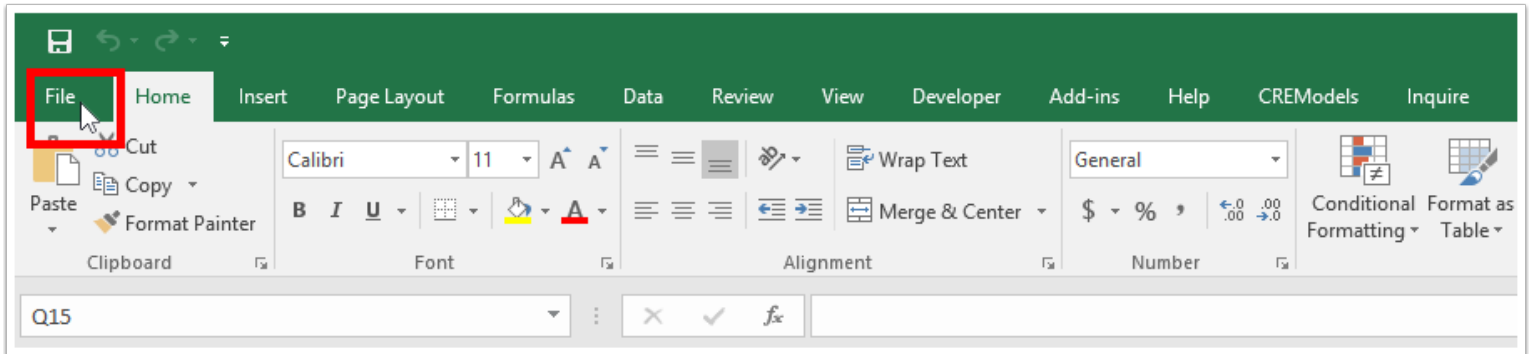
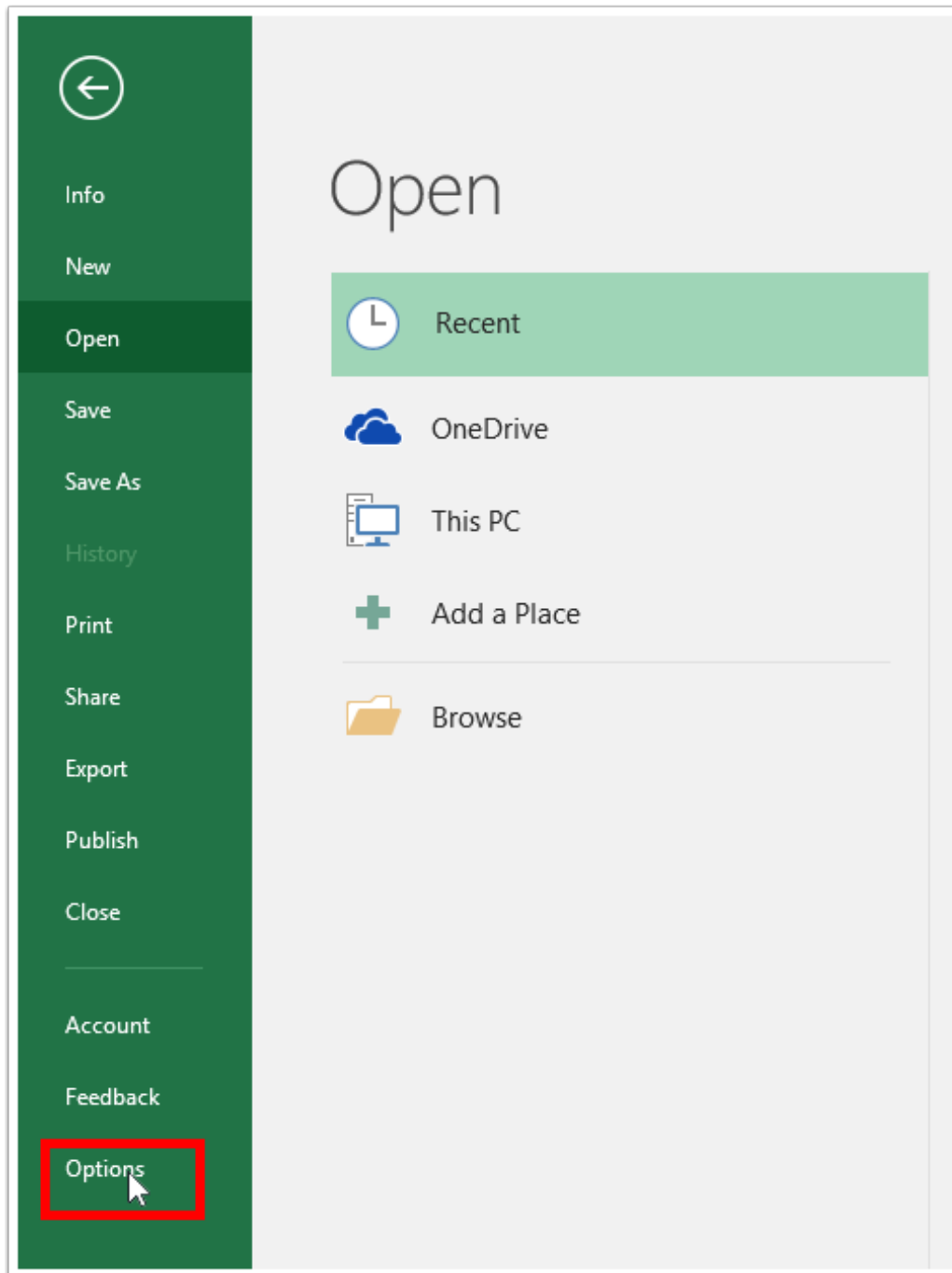


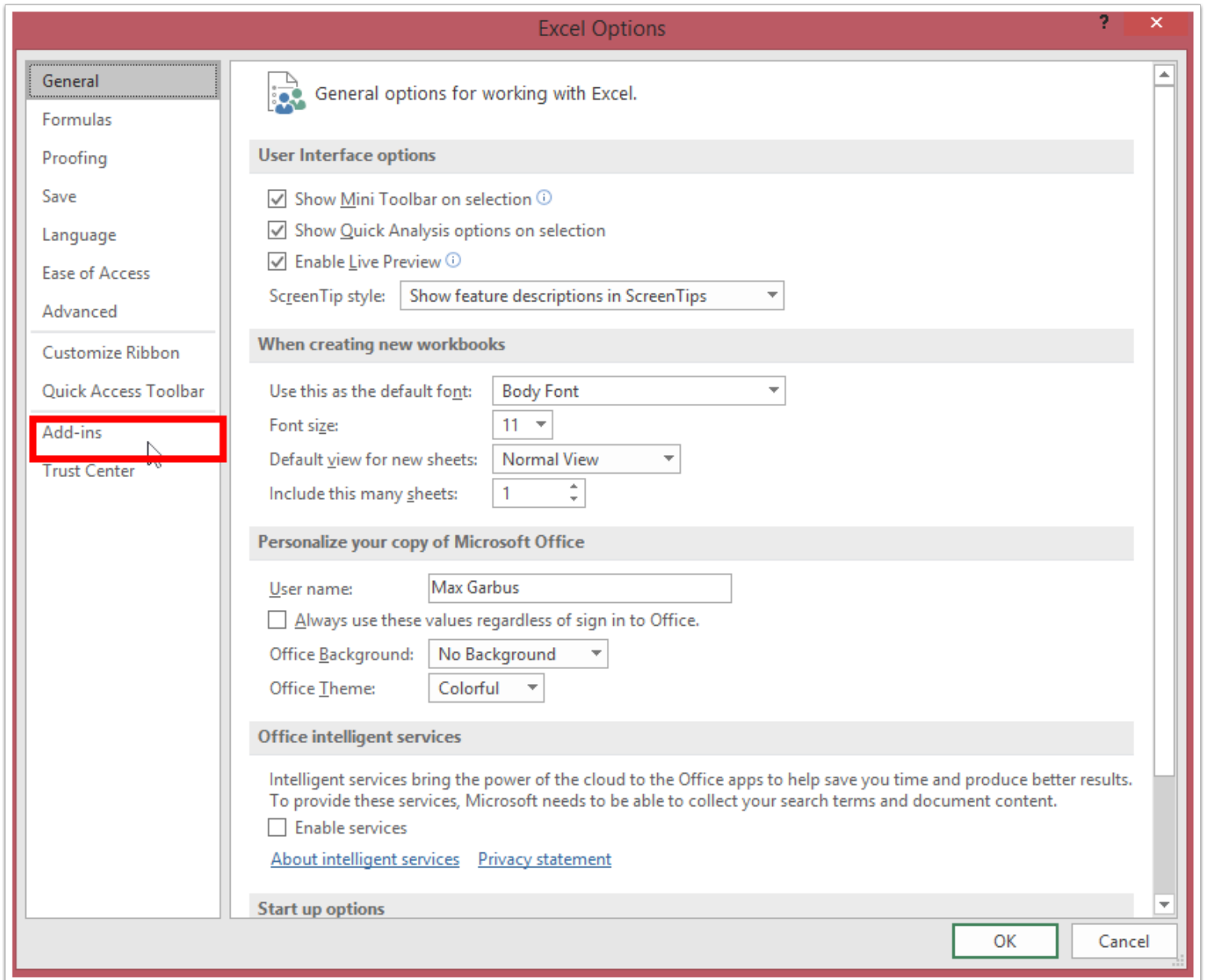
Select File



Go to Options

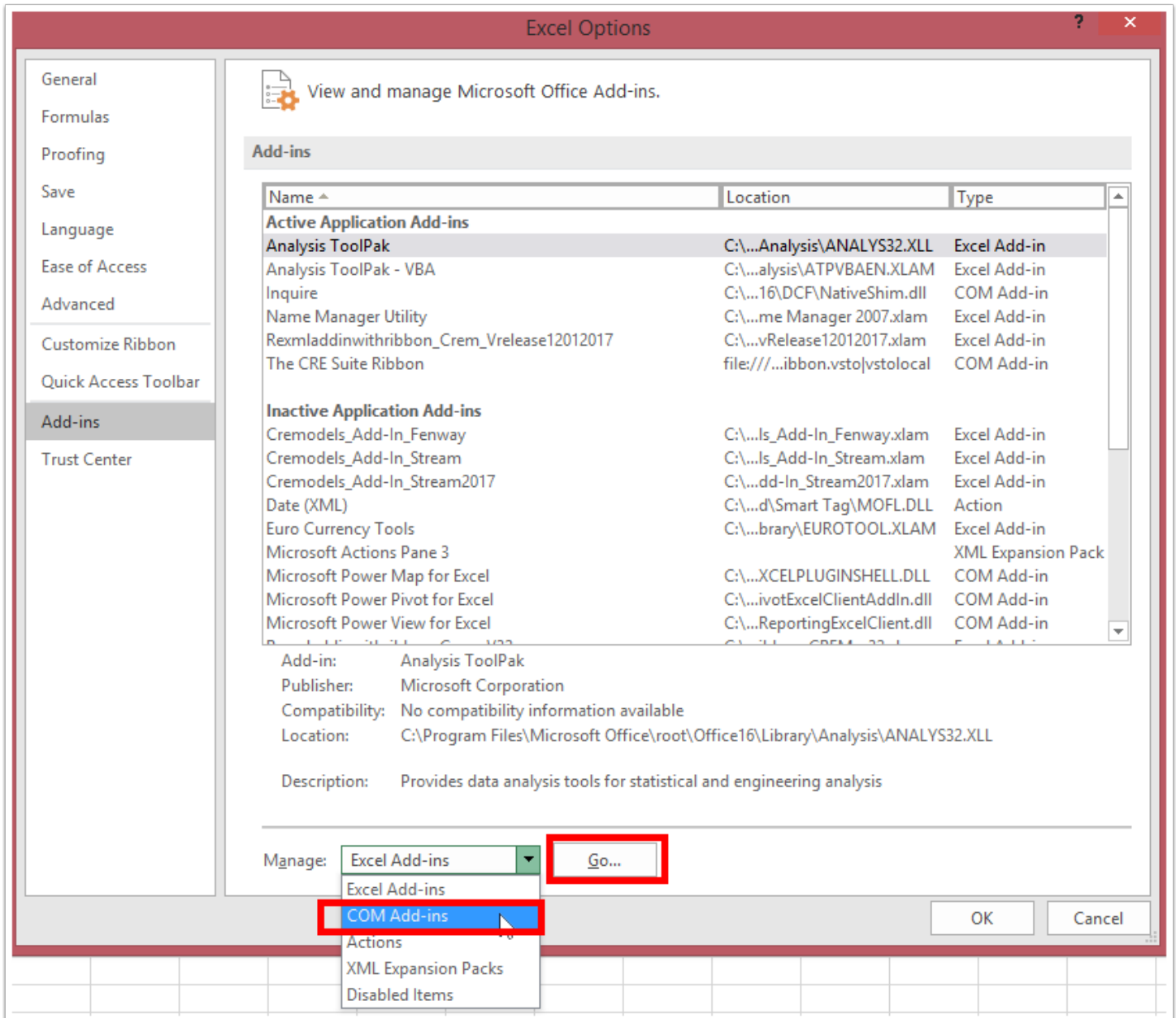


Navigate toward the Add-ins page in the Options dialog



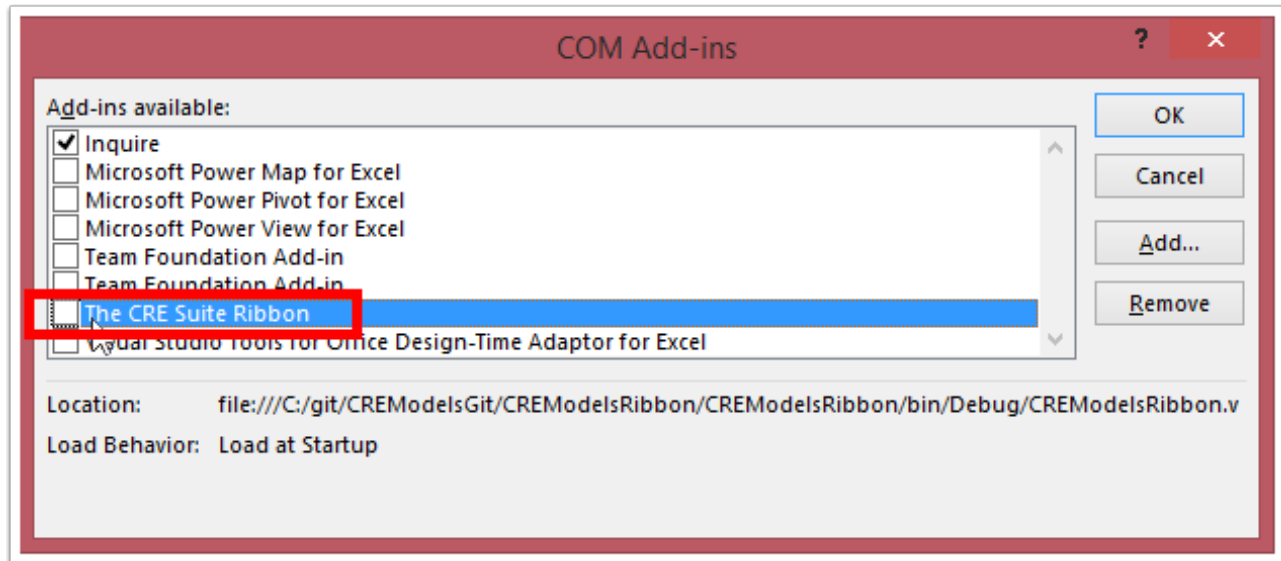
Select COM Add-ins

Choose the dropdown, select the COM Add-ins and click "Go"



Check to see if The CRE Suite Ribbon is selected

If this is not selected, click the button and make sure the checkbox is checked.



Confirm the selection is checked and select OK.

