

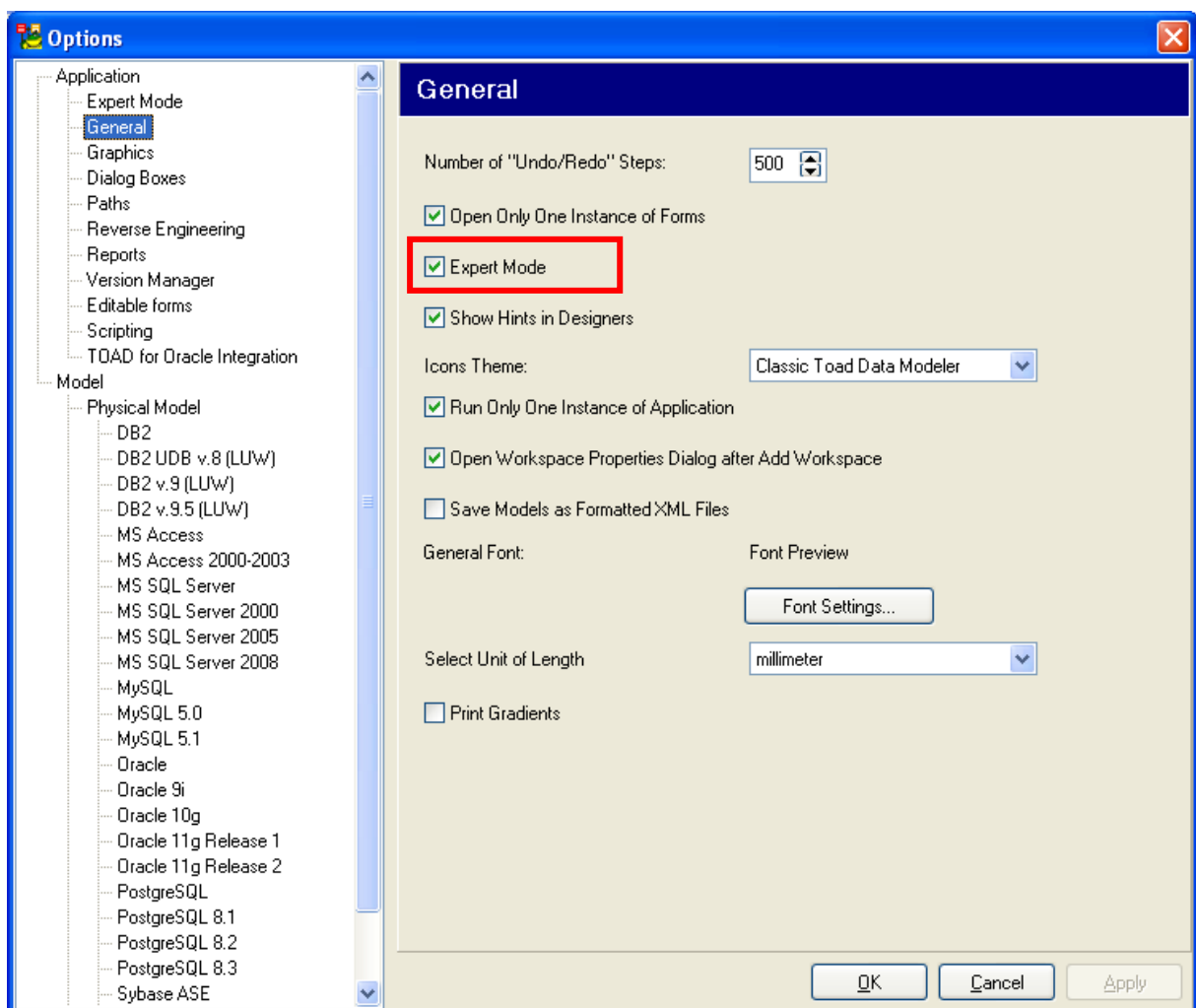
## How to Install a User Package

Toad Data Modeler is an extensible software and new features can be added to the software also via scripts created by users. The scripts can be distributed as packages – files with extension TXG.

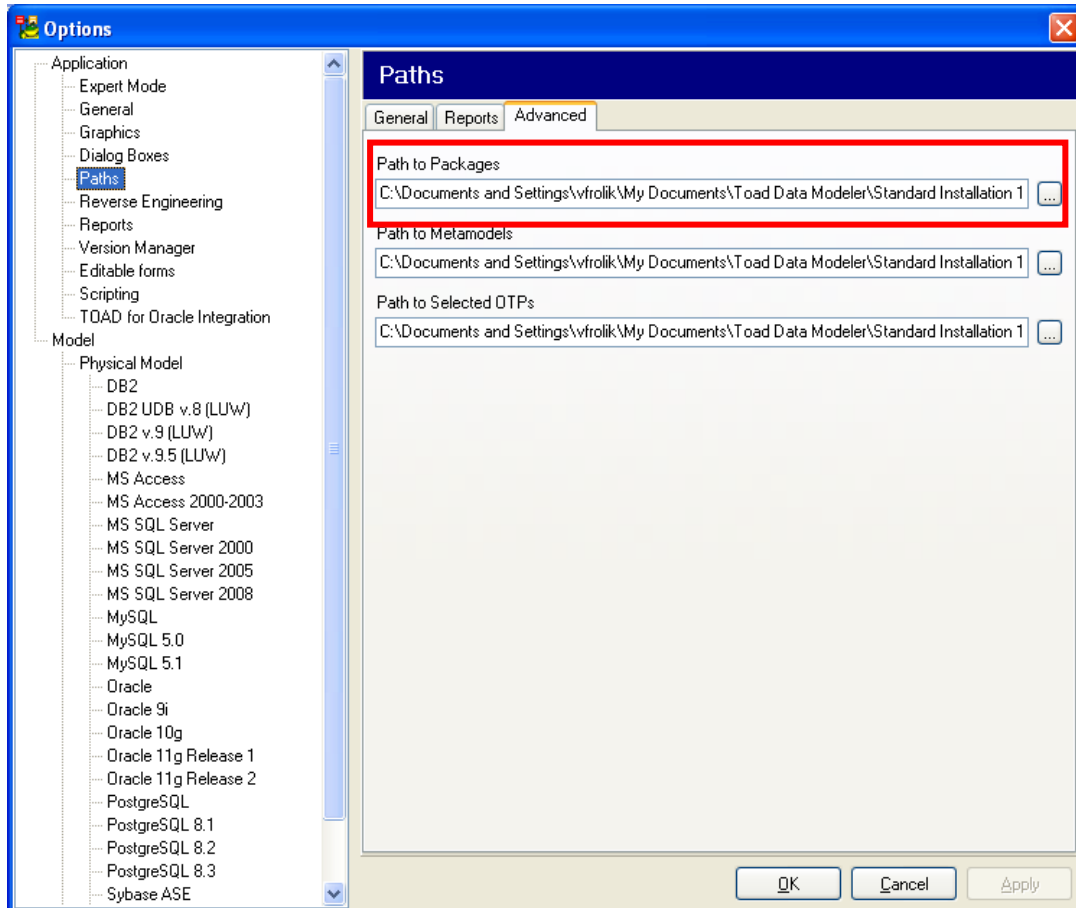
In some situations, user packages can also be used for bug fixes, because they have a higher priority than system packages that are standard part of product installation.

To install a user package, do the following:

1. Click **Settings | Options**. On tab **General** select the **Expert Mode** checkbox (additional features related to customization will be enabled).



2. Click **Paths | Advanced** tab. The path where user packages are stored is set here.  
Default path is:  
C:\Documents and Settings\<user name>\My Documents\Toad Data Modeler\<Installation name>\Packages\<{GUID}>



3. Make a backup of this folder.
4. Copy the TXG file you received from another Toad Data Modeler user or support engineer to this location.
5. Restart Toad Data Modeler.