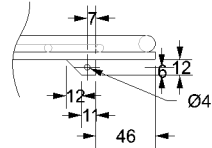
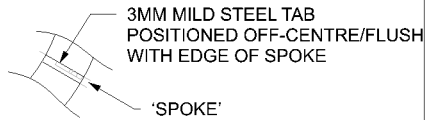


EACH 'SPOKE'/BAR NEEDS SUSPENSION TAB

SIDE VIEW ON SPOKES



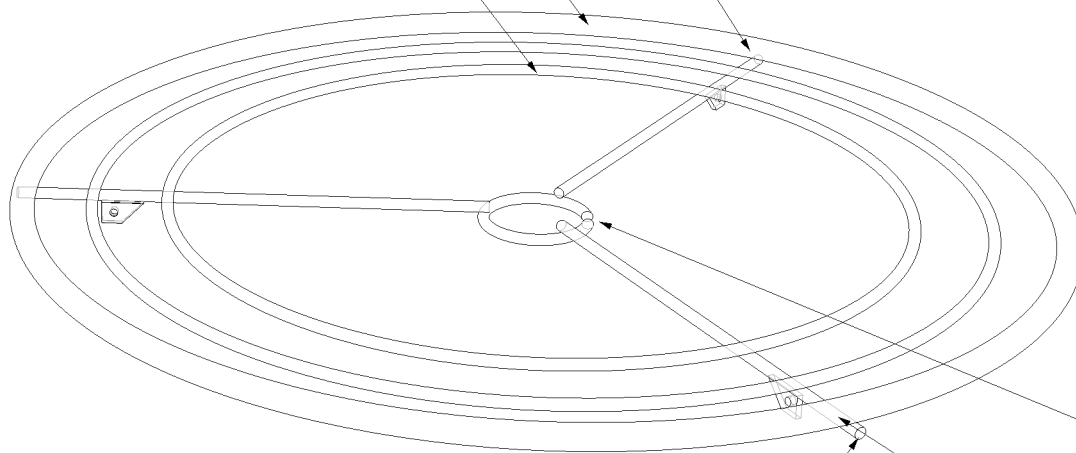
PLAN VIEW ON SPOKE



NOTE: 3MM HOLE ON UNDERSIDE OF FRAME.
HOLE CLOSE TO SUPPORT ROD.
USED TO HANG FRAME FOR POWDER-COATING
PLUS SUSPENSION WIRE STORAGE

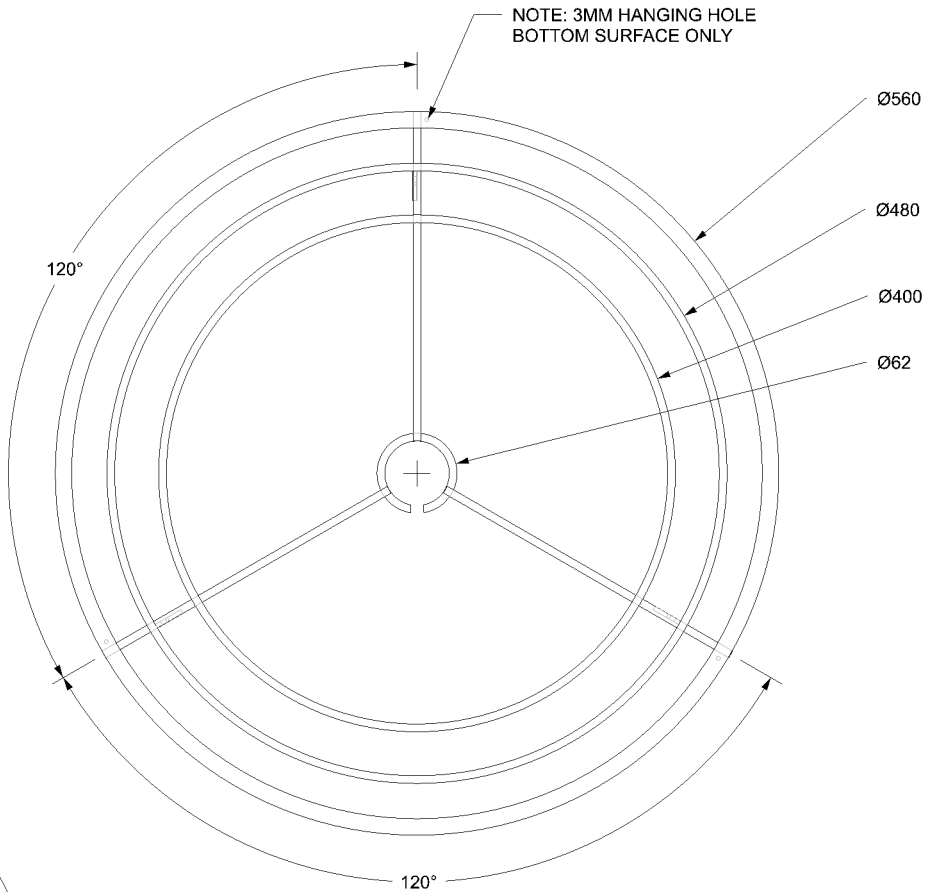
OUTER RING MADE FROM 1/2" DIA.
MILD STEEL TUBE

INNER RINGS 6MM MILD STEEL BAR



ALL ENDS FINISHED FLAT
NO SHARP EDGES

ALL WELDS TO BE ON UNDERSIDE.
TOP SURFACE TO BE AS NEAT AS POSSIBLE



Drawing Title: Shoal226 Framework Rev.C

Date: 11/04/17 Reference: Shoal226 (2017) - 60DIA

Notes: Outer ring to be made from 1/2" mild steel tube

Inner 2 rings from 6mm mild steel rod

All dimensions are in millimetres (mm) t: +44 (0) 1538 371471 e: info@scabetti.co.uk

Dominic Bromley
Frances Bromley  scabetti

©2016 Scabetti Ltd. All rights reserved. Scabetti and the Scabetti logo are registered trademarks. Scabetti is a member of ACID (Anti Copying in Design).