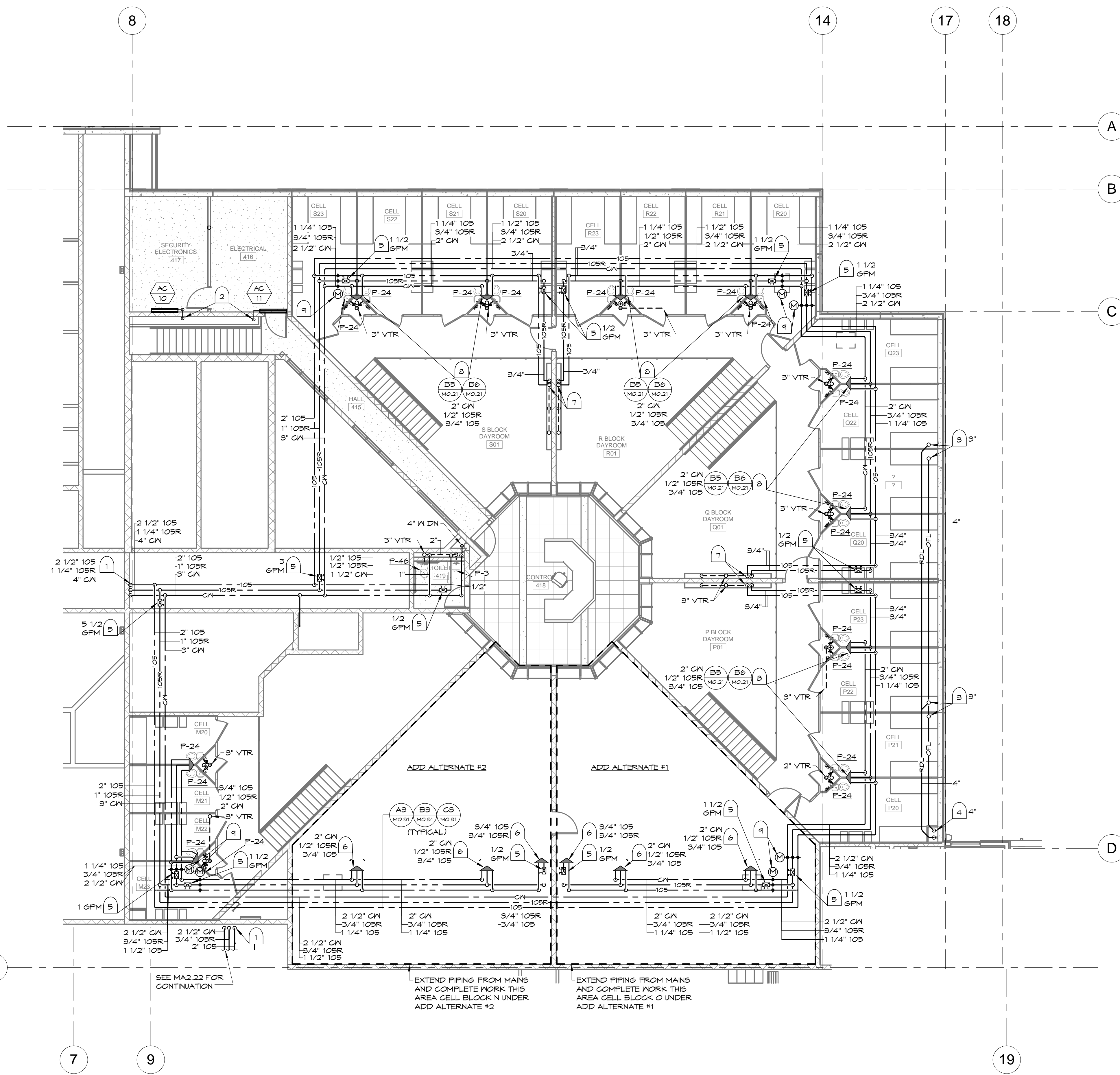


8/10/2015 2:27:57 PM P:\2011\1106 - Franklin Co Jail Drawings\1106-Mech\Recovery.plt



D3 BUILDING 'A' AREA 1 SECOND FLOOR PLAN - PLUMBING
1/8" = 1'-0"

GENERAL NOTES

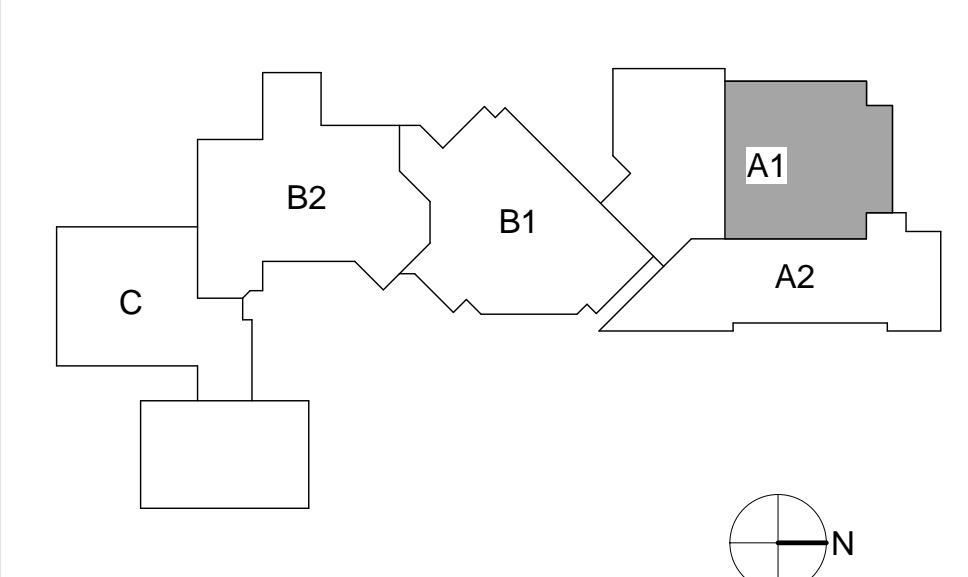
- A. ALL WORK WITHIN CONTRACTOR'S SCOPE SHALL COMPLY WITH ALL APPLICABLE STATE & LOCAL CODES & ALL REQUIREMENTS OF THE AUTHORITY HAVING JURISDICTION.
- B. COORDINATE PLUMBING FIXTURES & RELATED PIPING WITH ALL OTHER TRADES AS REQUIRED.
- C. REFER TO ARCHITECTURAL FLOOR PLANS FOR EXACT NEW FIXTURE LOCATIONS & MOUNTING HEIGHTS.
- D. LOCATE WATER PIPING IN HEATED AREAS ONLY. DO NOT LOCATE PIPING IN NON-INSULATED ATTIC, CEILING & WALL SPACES.
- E. PROVIDE WATER HAMMER ARRESTORS FOR ALL FLUSH VALVE FIXTURES. SIZE AND INSTALL PER MANUFACTURERS REQUIREMENTS.
- F. PROVIDE SEISMIC RESTRAINTS FOR ALL EQUIPMENT & PIPING AS RECOMMENDED IN THE LATEST EDITION OF SNAKMA "SEISMIC RESTRAINT MANUAL GUIDELINES FOR MECHANICAL EQUIPMENT". CONSULT LOCAL CODES FOR THE SEISMIC RATING OF THE BUILDING SITE.
- G. VERIFY EQUIPMENT REQUIREMENTS & COORDINATE WITH ALL OTHER TRADES AS NEEDED TO INSURE THAT SERVICE & OTHER REQUIRED CLEARANCES ARE MAINTAINED.
- H. SEAL ALL PENETRATIONS OF FIRE-RATED ASSEMBLIES WITH U.L. APPROVED FIRE-RATED SYSTEM. REFER TO ARCHITECTURAL DRAWINGS.

PHASE NOTE:
SEE ARCHITECTURAL PHASING PLAN FOR SUGGESTED PHASING AND PROVIDE WORK WITHIN PHASE LIMITS UNLESS NOTED OTHERWISE ON PLANS. PHASING PLAN IS A SUGGESTED METHOD TO ACCOMMODATE JAIL OPERATIONS. CONTRACTOR TO COORDINATE AND WORK WITH OWNER AND GENERAL CONTRACTOR AND ADJUST AS REQUIRED. EXISTING CONDITIONS SHOWN ARE BASED ON ASBUILT DRAWINGS PROVIDED BY FRANKLIN COUNTY AND MAY NOT BE EXACT. FIELD VERIFY AND ADJUST AS REQUIRED. PHASING DIRECTION IS A SUGGESTED METHOD. CONTRACTOR TO VERIFY AND COORDINATE WITH GENERAL CONTRACTOR THE EXISTING CONDITIONS AS WORK PROGRESSES. ADJUST AND MODIFY WITH GENERAL CONTRACTOR AND JAIL STAFF AS REQUIRED.

KEYNOTES

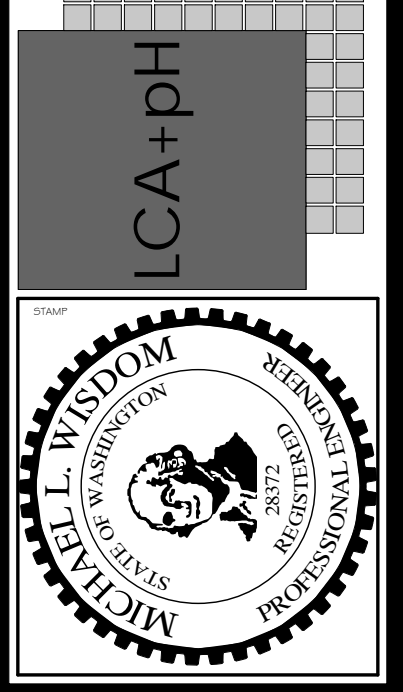
- 1. WATER PIPING FROM BELOW. SIZE NOTED. SEE MA2.11 FOR CONTINUATION.
- 2. 3/4" CONDENSATE DRAIN LINES DOWN IN CHASE AND DISCHARGE INTO NEAREST FLOOR SINK IN MECHANICAL ROOM BELOW.
- 3. ROOF DRAIN ABOVE. SIZE AS NOTED.
- 4. RDL & OFL THRU FLOOR. SIZE AS NOTED.
- 5. CIRCUIT SETTER, SIZE FOR GPM NOTED. SEE DETAIL C4 ON SHEET MO.31.
- 6. BASE BID. VALVE AND CAP PIPING FOR FUTURE. SIZE NOTED. SEE ADD ALTERNATES #1 AND 2.
- 7. DROP 3/4" 105 & 105R DOWN IN CHASE TO SHOWERS BELOW.
- 8. RUN AND CONNECT TO CELL PLUMBING CHASE ROUGH-IN. SEE RISER DIAGRAMS.
- 9. 120V POWER OPEN POWER CLOSED MOTORIZED BALL VALVE ON GN, HA, AND HXR LINES. SIZE FULL LINE SIZE.

KEYPLAN



Engineering Inc. DBA HVAC
Engineering, Inc.
2222 Broadway Avenue
Boise, Idaho 83706
208.343.3663
fax 208.343.9625
JOB# 11106

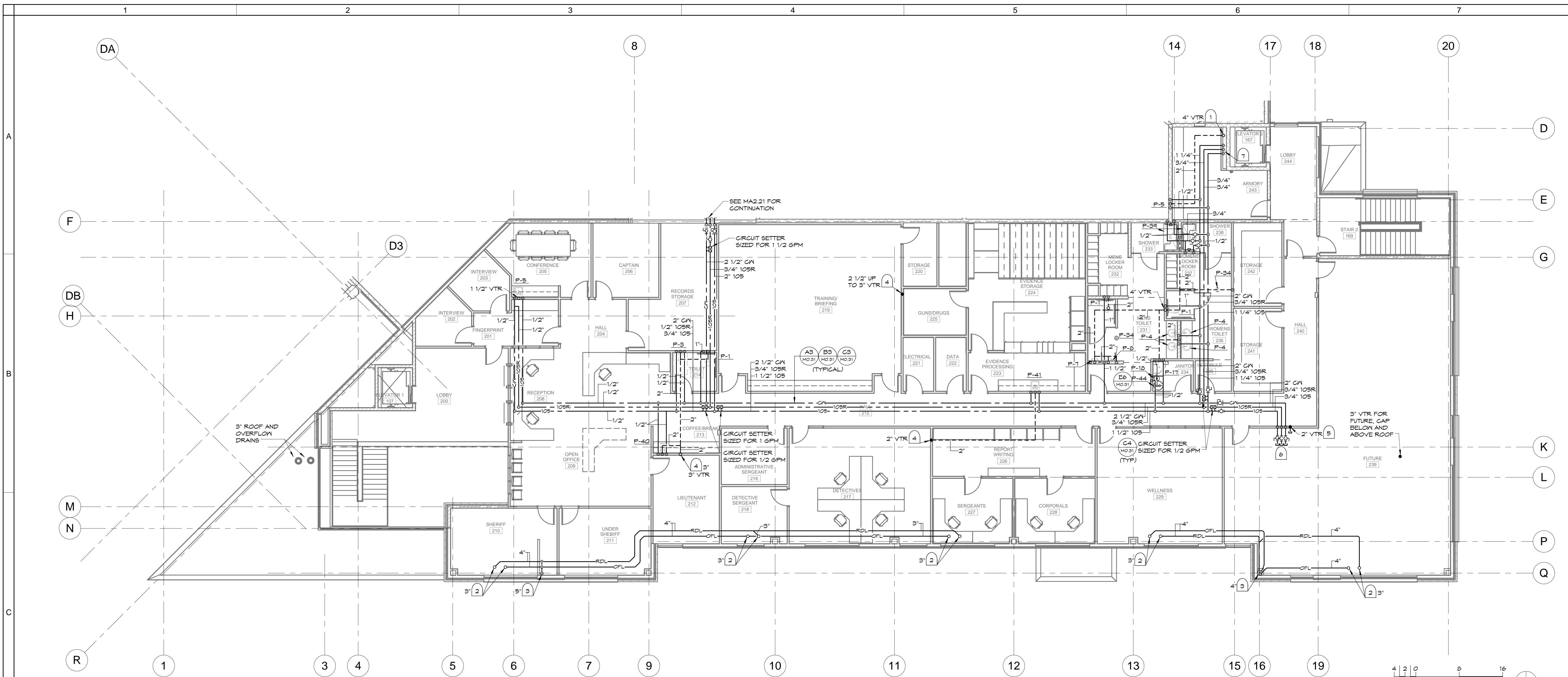
LCA+PH, LLC
ARCHITECTURE PLUMBING MECHANICAL DESIGN
1923 Douglas Lane
Boise, ID 83707
Phone: 208.343.9625
Fax: 208.343.9625
Copyright 2012. All rights reserved. Reproduction or use in any form by any means - graphic, electronic, mechanical, etc. - without written permission of LCA+PH, LLC is prohibited and subject to copyright protection.



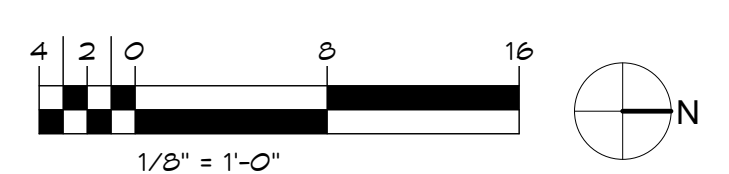
**FRANKLIN COUNTY
JAIL ADDITION**
PASCO, WASHINGTON
BLDG 'A' AREA 1 2ND FLOOR PLAN - PLUMBING

MARK	DATE	DESCRIPTION

JOB NO.: 11022.02
DATE: 08/13/12
DRAWN BY: NAJ
CHECKED BY: MW
SHEET NO.:
MA2.21
Construction Documents



C1 BUILDING 'A' AREA 2 SECOND FLOOR PLAN - PLUMBING
1/8" = 1'-0"



GENERAL NOTES

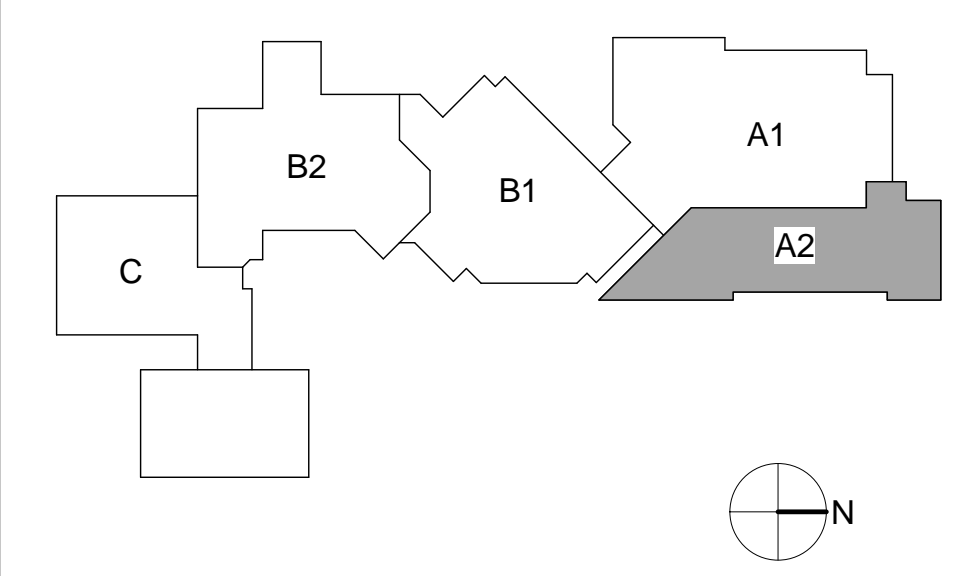
- A. ALL WORK WITHIN CONTRACTOR'S SCOPE SHALL COMPLY WITH ALL APPLICABLE STATE & LOCAL CODES & ALL REQUIREMENTS OF THE AUTHORITY HAVING JURISDICTION.
- B. COORDINATE PLUMBING FIXTURES & RELATED PIPING WITH ALL OTHER TRADES AS REQUIRED.
- C. REFER TO ARCHITECTURAL FLOOR PLANS FOR EXACT NEW FIXTURE LOCATIONS & MOUNTING HEIGHTS.
- D. LOCATE WATER PIPING IN HEATED AREAS ONLY. DO NOT LOCATE PIPING IN NON-INSULATED ATTIC, CEILING & WALL SPACES.
- E. PROVIDE WATER HAMMER ARRESTORS FOR ALL FLUSH VALVE FIXTURES. SIZE AND INSTALL PER MANUFACTURER'S REQUIREMENTS.
- F. PROVIDE SEISMIC RESTRAINTS FOR ALL EQUIPMENT & PIPING AS RECOMMENDED IN THE LATEST EDITION OF SMACNA "SEISMIC RESTRAINT MANUAL SUBELINES FOR MECHANICAL EQUIPMENT." CONSULT LOCAL CODES FOR THE SEISMIC RATINGS OF THE BUILDING SITE.
- G. VERIFY EQUIPMENT REQUIREMENTS & COORDINATE WITH ALL OTHER TRADES AS NEEDED TO INSURE THAT SERVICE & OTHER REQUIRED CLEARANCES ARE MAINTAINED.
- H. SEAL ALL PENETRATIONS OF FIRE-RATED ASSEMBLIES WITH U.L. APPROVED FIRE-RATED SYSTEM. REFER TO ARCHITECTURAL DRAWINGS.

PHASE NOTE:
SEE ARCHITECTURAL PHASING PLAN FOR SUGGESTED PHASING AND PROVIDE WORK WITHIN PHASE LIMITS UNLESS NOTED OTHERWISE ON PLANS. PHASING PLAN IS A SUGGESTED METHOD TO ACCOMMODATE JAIL OPERATIONS. CONTRACTOR TO COORDINATE AND WORK WITH OWNER AND GENERAL CONTRACTOR AND ADJUST AS REQUIRED. EXISTING CONDITIONS SHOWN ARE BASED ON ASBUILT DRAWINGS PROVIDED BY FRANKLIN COUNTY AND MAY NOT BE EXACT. FIELD VERIFY AND ADJUST AS REQUIRED. PHASING DIRECTION IS A SUGGESTED METHOD. CONTRACTOR TO VERIFY AND COORDINATE WITH GENERAL CONTRACTOR THE EXISTING CONDITIONS AS WORK PROGRESSES, ADJUST AND MODIFY WITH GENERAL CONTRACTOR AND JAIL STAFF AS REQUIRED.

KEYNOTES

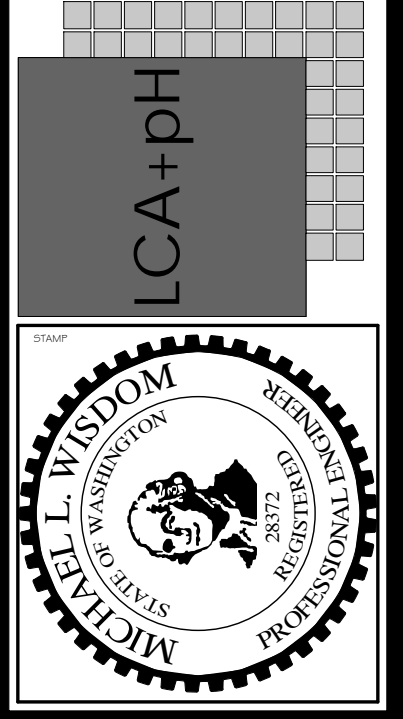
1. 4" VENT FROM BELOW. SIZE NOTED. SEE MA2.12 FOR CONTINUATION.
2. ROOF DRAIN ABOVE. SIZE NOTED.
3. RDL & OPL DOWN THRU FLOOR. SIZE NOTED.
4. VENT FROM BELOW AND VTR. SIZE AS NOTED. SEE MA2.12 FOR CONTINUATION.
5. 3/4" 105, 3/4" 105R, 3/4" CN & 2" VENT DOWN TO 1ST FLOOR CEILING SPACE. SEE MA2.12 FOR CONTINUATION.
6. 2" CN, 3/4" 105, & 3/4" 105R. CAP FOR FUTURE.
7. 3/4" 105, 105R & 1-1/4" CN, DOWN IN CHASE BELOW.

KEYPLAN



Engineering, Inc. DBA HVAC
Engineering, Inc.
2222 Broadway Avenue
Boise, Idaho 83706
208.343.3663
fax 208.343.9625
JOB# 11106

LCA+PH, LLC
ARCHITECTURE INTERIOR DESIGN
1221 Douglas Lane
Boise, ID 83707
208.343.3663
F 208.343.9625
COPYRIGHT 2012. All rights reserved. Reproduction or use in any form by any means - graphic, electronic, mechanical, etc. - without written permission of LCA+PH, LLC is prohibited and subject to criminal prosecution.

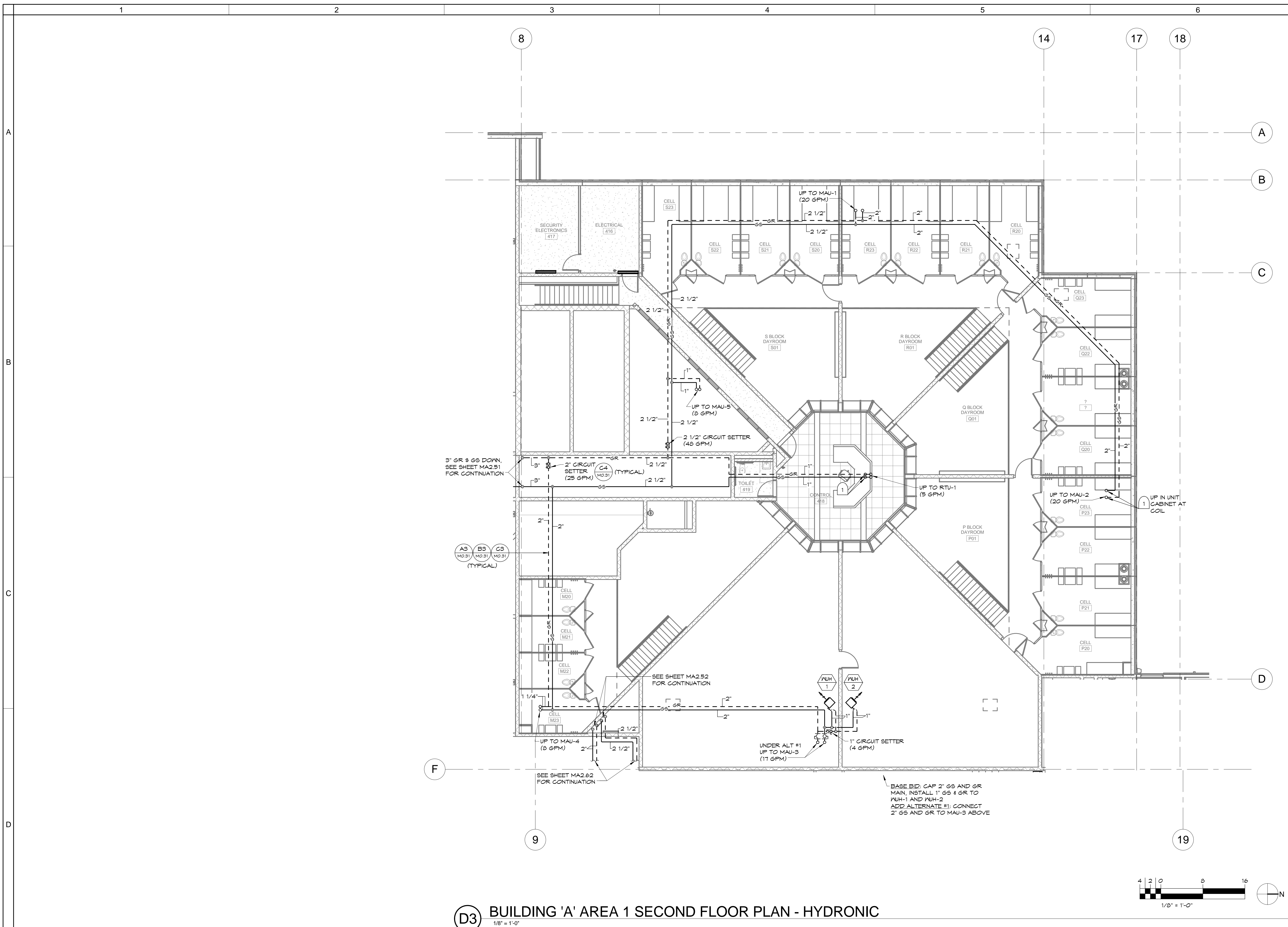


**FRANKLIN COUNTY
JAIL ADDITION**
PASCO, WASHINGTON
BLDG 'A' AREA 2 2ND FLOOR PLAN - PLUMBING

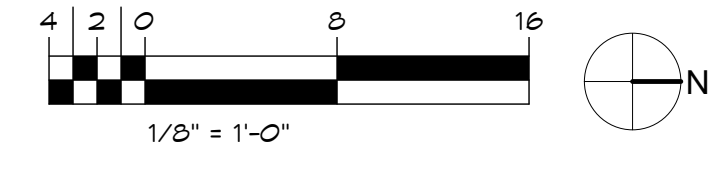
MARK	DATE	DESCRIPTION

JOB NO.: 11022.02
DATE: 08/19/12
DRAWN BY: NAH
CHECKED BY: MW

SHEET NO.:
MA2.22
Construction Documents



D3 BUILDING 'A' AREA 1 SECOND FLOOR PLAN - HYDRONIC
1/8" = 1'-0"



NOTE:
ALL HYDRONIC COILS EXCEEDING 20 GPM SHALL HAVE PRESSURE TEST PORTS TO ALLOW READING PRESSURE DROP ACROSS COIL. PROVIDE IN SUPPLY AND RETURN MAINS NEAR THE END OF THE RUN. PRESSURE TEST PORTS FOR BALANCING PUMP CONTROLS.

GENERAL NOTES

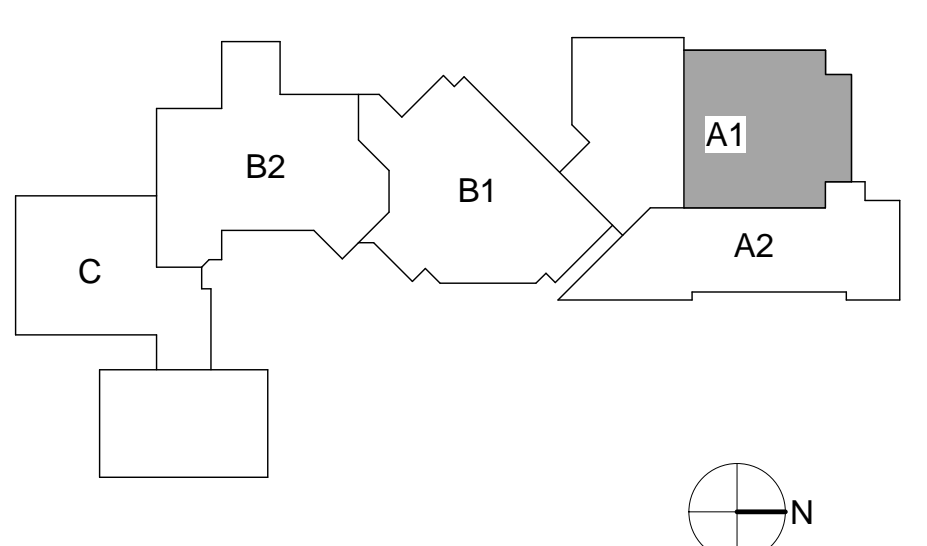
- A. COORDINATE WORK WITH ALL OTHER TRADES AS REQUIRED.
- B. SEE HVAC FLOOR PLAN FOR DUCTWORK & RELATED EQUIPMENT. COORDINATE AS REQUIRED.
- C. PROVIDE PROPER PIPE GUIDES AT 4X DIA, 14X DIA AND 45 FEET FROM EXPANSION JOINT.
- D. LOCATE & INSTALL EXPANSION JOINTS AS REQUIRED BY SPECIFICATION SECTION 230516.
- E. PIPING ANCHORS AND GUIDES ARE TO BE MOUNTED TO STRUCTURAL STEEL OR CONCRETE.

PHASE NOTE:
SEE ARCHITECTURAL PHASING PLAN FOR SUGGESTED PHASING AND PROVIDE WORK WITHIN PHASE LIMITS UNLESS NOTED OTHERWISE ON PLANS. PHASING PLAN IS A SUGGESTED METHOD TO ACCOMMODATE JAIL OPERATIONS. CONTRACTOR TO COORDINATE AND WORK WITH OWNER AND GENERAL CONTRACTOR AND ADJUST AS REQUIRED. EXISTING CONDITIONS SHOWN ARE BASED ON ASBUILT DRAWINGS PROVIDED BY FRANKLIN COUNTY AND MAY NOT BE EXACT. FIELD VERIFY AND ADJUST AS REQUIRED. PHASING DIRECTION IS A SUGGESTED METHOD. CONTRACTOR TO VERIFY AND COORDINATE WITH GENERAL CONTRACTOR THE EXISTING CONDITIONS AS WORK PROGRESSES, ADJUST AND MODIFY WITH GENERAL CONTRACTOR AND JAIL STAFF AS REQUIRED.

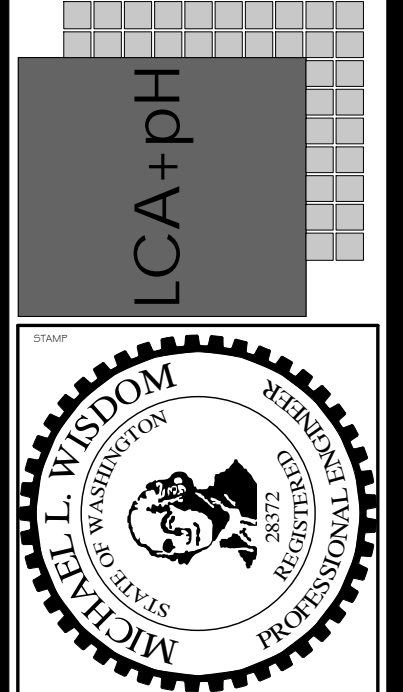
KEYNOTES

- 1. PETE'S PLUG FOR SYSTEM PRESSURE BALANCING IN UNIT AT COIL ON SUPPLY AND RETURN.

KEYPLAN



LCA+PH, LLC
ARCHITECTURE | PLANNING | INTERIOR DESIGN
1221 Douglas Lane
Boise, Idaho 83702
P: 208.343.3663
F: 208.343.3625
COPYRIGHT 2012. All rights reserved. Reproduction or use in any form by any means - graphic, electronic, mechanical, etc. - without written permission of LCA+PH, LLC is prohibited and subject to copyright protection.

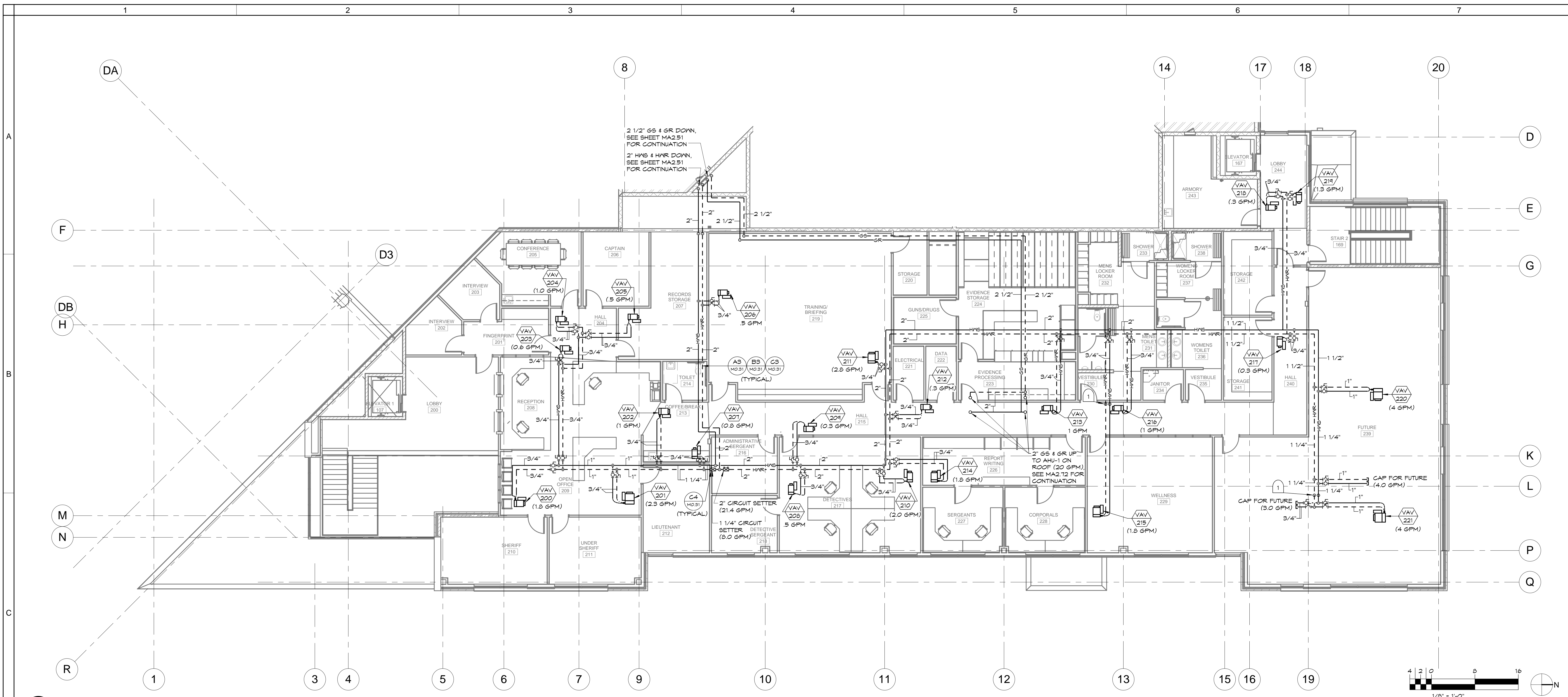


**FRANKLIN COUNTY
JAIL ADDITION**
PASCO, WASHINGTON
BLDG 'A' AREA 1 2ND FLOOR PLAN - HYDRONIC

MRK	DATE	DESCRIPTION

JOB NO.: 11022.02
DATE: 08/13/12
DRAWN BY: NAJ
CHECKED BY: MW
SHEET NO.:
MA2.61
Construction Documents

Engineering Inc. DBA HVAC
Engineering, Inc.
2222 Broadway Avenue
Boise, Idaho 83706
208.343.3663
fax 208.343.9625
JOB# 11106



C1 BUILDING 'A' AREA 2 SECOND FLOOR PLAN - HYDRONIC
1/8" = 1'-0"

NOTE:
ALL HYDRONIC COILS EXCEEDING 20 GPM SHALL HAVE PRESSURE TEST PORTS TO ALLOW READING PRESSURE DROP ACROSS COIL. PROVIDE IN SUPPLY AND RETURN MAINS NEAR THE END OF THE RUN. PRESSURE TEST PORTS FOR BALANCING PUMP CONTROLS.

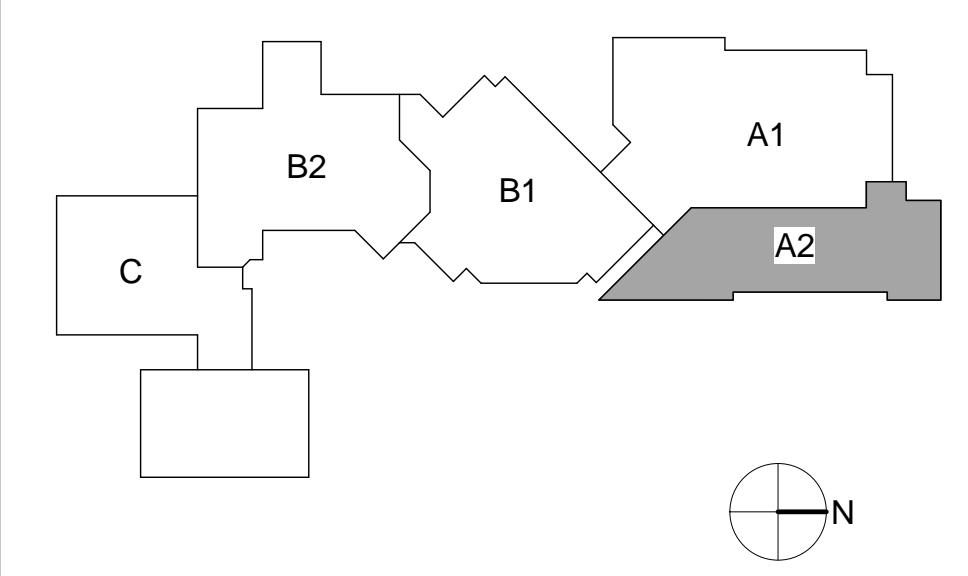
GENERAL NOTES

- A. COORDINATE WORK WITH ALL OTHER TRADES AS REQUIRED.
 - B. SEE HVAC FLOOR PLAN FOR DUCTWORK & RELATED EQUIPMENT. COORDINATE AS REQUIRED.
 - C. PROVIDE PROPER PIPE GUIDES AT 4X DIA, 14X DIA AND 45 FEET FROM EXPANSION JOINT.
 - D. LOCATE & INSTALL EXPANSION JOINTS AS REQUIRED BY SPECIFICATION SECTION 290916.
 - E. PIPING ANCHORS AND GUIDES ARE TO BE MOUNTED TO STRUCTURAL STEEL OR CONCRETE.
- PHASE NOTE:
SEE ARCHITECTURAL PHASING PLAN FOR SUGGESTED PHASING AND PROVIDE WORK WITHIN PHASE LIMITS UNLESS NOTED OTHERWISE ON PLANS. PHASING PLAN IS A SUGGESTED METHOD TO ACCOMMODATE JAIL OPERATIONS. CONTRACTOR TO COORDINATE AND WORK WITH OWNER AND GENERAL CONTRACTOR AND ADJUST AS REQUIRED. EXISTING CONDITIONS SHOWN ARE BASED ON AS-BUILT DRAWINGS PROVIDED BY FRANKLIN COUNTY AND MAY NOT BE EXACT. FIELD VERIFY AND ADJUST AS REQUIRED. PHASING DIRECTION IS A SUGGESTED METHOD. CONTRACTOR TO VERIFY AND COORDINATE WITH GENERAL CONTRACTOR THE EXISTING CONDITIONS AS WORK PROGRESSES. ADJUST AND MODIFY WITH GENERAL CONTRACTOR AND JAIL STAFF AS REQUIRED.

KEYNOTES

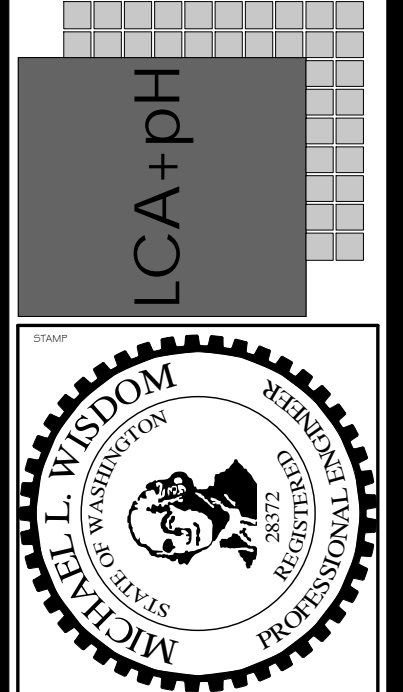
1. PETE'S PLUG IN SUPPLY AND RETURN PIPING FOR SYSTEM PRESSURE BALANCE.

KEYPLAN



Engineering, Inc. DBA HVAC
Engineering, Inc.
2222 Broadway Avenue
Boise, Idaho 83706
208.343.3663
fax 208.343.9625
JOB# 11106

LCA+PH, LLC
ARCHITECTURE INTERIOR DESIGN
1221 Douglas Lane
Boise, ID 83702
208.343.3663
F 208.343.9625
COPYRIGHT 2012 All rights reserved. Reproduction or use in any form by any means, graphic, electronic, mechanical, etc., is strictly prohibited without the written permission of LCA+PH, LLC. LCA+PH, LLC is a limited liability company.



**FRANKLIN COUNTY
JAIL ADDITION**
PASCO, WASHINGTON
BLDG 'A' AREA 2 2ND FLOOR PLAN - HYDRONIC

MARK	DATE	DESCRIPTION

JOB NO.: 11022.02
DATE: 08/13/12
DRAWN BY: NAJ
CHECKED BY: MW

SHEET NO.:
MA2.62
Construction Documents